

## **Statement of Purpose**

**Statement of Purpose – Thornbury House  
SC 384018**



**Registered Provider:** SureCare Residential, part of the White Trees Group

**Responsible Individual:** Emma Barr

**Registered Manager:** Tina Twyman

**Reviewed:** Sept 2023

## **Statement of Purpose**

### ***WHO THORNBURY HOUSE IS ABLE TO SUPPORT:***

Thornbury House provides residential care to up to four housemates aged up to 18 years old and can be of mixed gender.

We are able to support housemates with various needs, as we have in place a well-equipped homes adults team (please see the information in the Leadership and Management section below for details on this).

In addition to this we have an in-house Wellbeing Team, who engage in therapeutic support with housemates within the home and also provide support/coaching for our home's adults team (please see further information on this in the below Thornbury House ethos section).

At Thornbury House we have four females between the ages of 11 and 16.

Our main focus is to support the housemates with their individual needs.

Two of our housemates came to us as self harmers and it is hoped that we can encourage them to accept support from the wellbeing team, therapy and CAMHS.

It is our aim that the housemates feel safe, secure, nurtured and cared for. For them to accept support from the home's adults with regulating their emotions and challenging behaviour.

We would like our housemates to develop their confidence and self esteem, and to be able to express themselves freely while having routine, structure and boundaries which they have lacked in the past. To be able to take age appropriate risks while knowing that they have the support from the home's adults.

The housemates in placement had been out of education for some time before coming to Thornbury so it is hoped that we can encourage education whether that being in a mainstream school or a specialist provision.

Before coming to Thornbury House some young people's relationships with family were fractured. We will support the housemates in building on these relationships so that they become positive

.

### ***THORNBURY HOUSE ETHOS:***

Surecare's Vision is [to help housemates to build better, brighter futures.](#)

Thornbury House is one of eight homes run by SureCare Residential Ltd (part of the White Trees Group). The White Trees Group provides a range of therapeutic, residential and educational services for young people.

## **Statement of Purpose**

SureCare has a therapeutic approach to care, and every housemate is supported through the home's adults receiving ongoing training, and coaching, relevant to the housemates within Thornbury House. SureCare provides in-house (and external where needed) support for all housemates through our Wellbeing Team (please see below section in 'How we support housemates with their health' section).

Thornbury House aims to encourage independence and positive experiences for all housemates in our care. Our main focus is to equip each housemate with the necessary tools, and support, to facilitate their transition back into foster care, family home or into semi/independent living.

We aim to educate all housemates in learning, and managing, to live with their personal challenges and to understand how it affects them as individuals.

All of our housemates have unique skills and abilities and we seek to empower them to engage in meaningful opportunities, which allows each housemate to express their personalities and raise their self-esteem.

We strive to provide a quality service built on respect, trust and honesty and believe in offering equal opportunities to all.

We believe in respecting and supporting the young person's cultural, spiritual beliefs, and gender preference.

We actively encourage, and facilitate, visits to places of worship to fulfill each young person's spiritual beliefs. This is all documented in the young person's care plan, and is updated monthly.

SureCare focuses on positive outcomes for our young people. We understand that progress and achievement is very individual and therefore all support offered is tailored to the unique needs of each young person. We aim to celebrate every achievement, however small this may seem. We have an achievement log which is completed for all achievements made by the young person, to empower them in feeling their own successes. We also have a Golden Moments log which we complete each time the housemate completes something new to them, or has had a hugely successful outcome in.

We continually review the needs of each young person. Multi-disciplinary meetings and effective inter-agency working will ensure that all professionals involved with the housemate can determine the best care & placement plan.

SureCare aims to empower housemates in the decision-making process. We have developed our own framework to support this, Building Brighter Futures. We implement this following the White Trees Way, which we embed throughout our practice and embrace a culture of equipping, empowering and educating all our housemates with the skills they will need to have a happy and successful future. We educate all housemates with the strategies that work best for them to be emotionally resilient enough to cope with life's unexpected difficulties.

Please see our White Trees Way tree, with details on how we will use this in supporting our housemates (further information can be found in our How we are therapeutic section).

## Statement of Purpose

**BUILDING BRIGHTER FUTURES FRAME WORK**



**ENRICH**

We **Enrich** our Young People through our family orientated homes. We give our Young People the same opportunities as all other young people, within a stable, loving, and nurturing environment. We strive to ensure all Young Persons feel a sense of belonging, to maximise their chances of success in adulthood.

**EQUIP**

Our goal is to **Equip** all Young Persons with the necessary social, emotional and practical skills they need to live healthy and successful lives as adults. We establish caring relationships with staff that are underpinned by positive support, appropriate boundaries and empathy. Many of our Young People have not experienced secure attachments throughout their early years, and developing positive relationships with staff members can help to make up for some of the social and emotional development that has been missed.

**EMBRACE**

We **Embrace** the uniqueness of every Young Person. Each Young Person who comes into our homes brings with them their own story and an individual set of strengths and challenges. First and foremost we work with them to accept and embrace who they are, and reimagine what the future holds for them, with us guiding them every step of the way.

**EMPOWER**

Everything we do is aimed to **Empower** our Young People to succeed. We support and develop all Young Persons emotional needs, their understanding of the world and their ability to cope, contribute and succeed in their community once leaving Residential Care. We offer our Young People a voice to ensure they are heard. We are the White Trees Family and we encourage our past Young People to keep in touch with us and continue our support of them into adulthood.

**EDUCATE**

We **Educate** our Young People in the way they need. Some of our Young People may have histories of rejection from previous placements. We ensure that the knowledge and skills we equip our young people with is personalised to them, and is delivered in a way in which they can engage with and learn from.

**ENCOURAGE**

We **Encourage** staff and young people to enjoy life, and do this by making everyday tasks as creative, adventurous, fun, and diverse as possible to make this a success. We all need encouragement to grow because it often involves an element of risk taking - putting ourselves out there with the knowledge we may fail. We encourage ourselves, each other and the Young People in our care to get back up and try again.

**ENGAGE**

Our homes are set up to **Engage** our Young People in our community. We create positive, homely environments that promote sustained engagement from all involved. We achieve this by working to meet the Young Persons emotional needs first, creating positive relationships and delivering tailored support.

WhiteTrees  
group



### Thornbury House ethos and values are:

- It all starts with Environment
- Nothing is Impossible
- Building Brighter Futures
- Lead by Example
- Actions Speak Louder Than Words
- Communicate the Small Things
- We accept housemates for who they are.
- We don't judge.
- We see the person, not the behaviour.
- We show empathy not sympathy.
- We allow Housemates the time and space to find their identity.

### OUR ACCOMODATION:

## **Statement of Purpose**

Thornbury House is able to offer up to four children male or female, aged up to 18 years old residential accommodation for 52 weeks a year. The building has been designed to meet care standard requirements but remains homely and comfortable. The accommodation meets all health and safety regulatory requirements and offers a variety of communal and private spaces for children to be supported with social and educational needs.

Thornbury House is a spacious detached property, in a community neighborhood with a clear boundary.

The house has a fully fitted kitchen, utility room, dining room, lounge, games room, toilet downstairs and four rooms and a 1 bathroom, 1 shower room allocated to housemates upstairs. All toilets and bathrooms/showers have locks to promote the child's safety at these intimate times. In addition to this the home's adults have an office downstairs and one sleep-in room upstairs, the downstairs office is used for the additional sleep-in room for the home's adults .

All housemates have their own bedroom and at no point will a child share a bedroom. Children will be afforded the opportunity to contribute to aspects of the home's day to day management, this will include decoration and furnishings, improvements to the house or service and any future developments that they may ask for.

All housemates are involved in the decoration and furnishings of their own bedrooms.

### ***OUR LOCATION:***

Braintree lies north east of Chelmsford in Essex and has convenient access to the A120, giving a direct route to Stansted Airport and the M11 beyond.

It is home to the popular designer outlet Freeport, next to which is a multi-screen cinema, retail park and restaurants.

The population of Braintree is over 155,000 and the area is controlled by Braintree District Council. The area boasts a branch line into London and has good transport links to the rest of the county.

Thornbury House is situated within the lovely Kings Park development of Braintree in Essex.

The environment is tranquil and the house is surrounded by the wonderful Essex countryside.

Our residential home provides a safe and contained environment for young persons. Externally the property benefits from driveway parking and a double garage with an enclosed garden to the rear.

Thornbury House has a location risk assessment in place, the outcomes of which are that there are no concerns raised for the house being situated in its current area and all risks remain relatively low regarding police involvement and that the area is comparatively affluent. Further information is available within the Location Risk Assessment.

### **Activities within the surrounding area**

- District Museum - which has natural history workshops
- Country Park and Discovery Centre with 100 acres of country

## Statement of Purpose

walks, lakes and woodlands

- The original Great Maze set in the wonderful Essex countryside with over 5 miles of pathway in over 10 acres of maize.
- Cinema complex
- Bowling
- Freeport Designer Village - outlets for discount Clothing



### **Train access**

Direct Braintree to Liverpool Street circa 1hr

2.7 miles via A120 by car.

2.7 miles **59 min** (2.7 mi) via Braintree Rd/B1018 or **1 hr 6 min** (3.0 mi) via Braintree Rd/B1018 and Mill Ln walking.

39 min on the bus from Tesco East store.

### ***SUPPORTING YOUNG PERSON'S NEEDS:***

We believe it is important to set a culture of understanding around diversity and an acceptance of different religious beliefs, ethnicity or sexual orientation.

Diversity is celebrated! Thornbury House holds theme nights in the house looking at different cultures and beliefs, which the housemates are encouraged to contribute to, participate in, and learn from. Housemates at the home are offered the opportunity to attend their place of worship and homes adults will provide whatever support is necessary to ensure this happens. The adults at the home are from mixed cultures/religious beliefs and provide an acceptance to those of all religions.



## **Statement of Purpose**

We embrace the celebration of a wide range of special days, and key traditional celebrations, for a wide range of cultures. For example, bonfire night, Chinese New Year, Easter, Eid and Christmas. We respect any celebration day that a housemate wishes to acknowledge, but also that they may choose not to celebrate as well.

We support each housemate to communicate in their preferred way, ensuring through our admission assessments that we have a home's adult team able to support this. We have the support of our Wellbeing Team, and School, in having access to many differing ways to support communication. Where needed, we are able to offer training/coaching to the home's adults team around this to ensure the housemate always feels included, loved, and understood.

### **HOW TO RAISE A COMPLAINT:**

SureCare has an overall Complaints policy which is used in Thornbury House, which can be found on SUE Solutions, in the Policies and Procedures section.

We view any complaint as an integral part of the housemate protection procedure, a way of upholding the principle of young people's rights, and also as a measurement for measuring the standard and quality of care and services provided for the housemate placed in our care.

Complaints from professionals, families, and the general public should be directed to the Homes Manager in the first instance (either verbally, or written), and can also be made via our website. Housemates also have access to this, as well as the opportunities to do this detailed below. Homes adults are aware of the complaints procedure, and have access to the Complaints policy (on SUE Solutions) and are able to direct any complaints to the Homes Manager (or Head Office where appropriate). Again, this can be verbally, or in writing, dependent on how the homes adults are feeling.

We strive to resolve any such complaints immediately, or within 28 days from the day the complaint is received. A letter will be written to acknowledge the receipt of the complaint, and will detail the action which will be taken and a timescale for this.

All complaints will be reviewed, and actioned, whether raised informally (verbally) or formally (written). All will be recorded within the Complaints Log in the location section on SUE Solutions.

Homes adults have a duty to empower housemates to use their right to complain and we will ensure that housemates can feel confident enough to bring their complaints to the attention of homes adults on duty or their key worker and exercise the right to complain without any subject to reprisal.

The home ensures that copies of the complaints procedure are listed in the young people's guide, which is given to and explained to housemates on their first day at the home (where possible, this is provided to the housemate prior to their move in date).

In addition to this the housemates are also made aware of who their independent visitor is, if they have one, and who their young person's rights officer is.

## **Statement of Purpose**

The Registered Manager is readily available to the housemates to discuss any issues they may have, to try to resolve any difficulties quickly, with a resolution all are happy with. All the housemates know that the Manager operates an open-door policy and they often take advantage of this by talking with the Manager, discussing issues or requesting answers to pressing questions they have.

Housemates have plenty of opportunities in Thornbury House to voice their views and opinions. They can discuss anything they are unhappy with, not only in regular young people's meetings, but also through 1:1 consultations, 1:1 discussions with the manager or their key worker and on the comment boxes that are available to them on incident related and keyworking paperwork.

Housemates also have opportunities to speak privately with relevant visitors to the home such as the Residential Compliance Manager, Wellbeing Lead, their social worker, Reg 44 inspectors, Independent Reviewing Officers and Ofsted. This allows ample opportunity for housemates to voice any concerns and gives homes adults opportunities to resolve any issues as soon as they arise.

In Thornbury House when housemates are not happy with the resolution provided, there are complaints forms that they can complete. Homes adults will support housemates to complete these forms and this is then communicated to the Registered Manager or nominated senior from the leadership team. The housemate will be spoken to, consulted about what they would like to happen with the complaint and then all necessary action will be taken. Every effort will be made to reach a resolution that the housemate is happy with and any action needed from the complaint will be implemented.

Ofsted  
National Business Unit  
Piccadilly Gate  
Store Street  
Manchester  
M1 2WD  
Tel: 03001231231

The Young person's Commissioner for England  
Sanctuary Buildings  
20 Great Smith Street  
London  
SW1P 3BT  
Tel: 020 7783 8330

Care Leavers Association  
Third Floor  
Swan Buildings,  
20 Swan Street,  
Manchester,  
M4 5JW  
Tel: 0161 637 5040



## **Statement of Purpose**

White Trees Head Office (Responsible Individual, and Directors)  
The Old Snap Factory  
Tywford Rd  
Bishops Stortford  
CM23 3LJ  
Tel: 01279 505326

### ***HOW WE KEEP OUR HOUSEMATES SAFE:***

Thornbury House is required to work within an interagency procedure to safeguard and promote the welfare of young people. This is the Essex Safeguarding Children's Board. The safety of housemates is important and is met through effective communication and monitoring. In practice this requires homes adults to report any concerns for, or allegations about young people.

This may mean that at times we have to report our concerns directly to Young people's Social Care, Police including HALO (housemate exploitation services) or (LADO) Local Authority Designated Officer, Multi Agency Safeguarding Hub (MASH). All contact information is available online and in the home's adults office. Further investigations might take place if appropriate.

If a young person's risk assessment increases regarding their personal safety, then the Manager along with Local authorities may devise personalized safety plans to protect each young person.

Thornbury House has a responsibility to communicate with families during any such process unless it places a housemate at risk of significant harm.

Additional support can be sought in this area for the young person. This can come in the form of the company psychologist who can work with housemates and home's adults in promoting the psychological wellbeing of the young person.

The centre of safeguarding is that if the housemates feel comfortable and safe in their home and have a good relationship with the home's adults, they are more likely to listen to the home's adults when they are trying to encourage them to stay safe. In addition to this, good relationships mean a housemate is more likely to open up to the home's adults about any situations that worry, upset or scare them.

The Home's Manager ensures homes adults understand the company's whistle blowing policy and emphasizes the ethos that all concerns, no matter how small they seem, must be reported, no matter who they concern. The number one priority for the home's adults is the young people.

The home's DSL (Designated Safeguard Lead) is: Tina Twyman, The Registered Manager. The DSL should be contacted on their individual mobile phone number in the first instance should homes adults have a safeguarding concern. If the concern involves the Homes Manager, SureCare has several designated safeguarding leads which include, Homes Managers, Residential Compliance Manager, Directors and (All Designated Leads are –level 3 qualified). Homes adults have access to all these contact details, held within the office.

## **Statement of Purpose**

Thornbury House has a Missing from Home Policy that provides the minimum standard for every housemate living at the home. The team creates a relaxed atmosphere in the home and makes a joint effort to make each housemate feel safe and build trusting relationships that encourage housemate to feel that they can talk to the homes adults about their problems, worries and frustrations. If the home is a safe haven for housemates then the likelihood that we will evidence a reduction in missing from home episodes.

Where a housemate has a history of missing from home, keywork sessions will be used to ask the housemate what triggers them to want to go missing and what they might feel homes adults within the home could do to help change that. Thornbury House considers each young person's preferences (likes /dislikes) and what motivates and engages them. This is then considered and incorporated into the activity planning and embracing and developing social interests to stimulate the young person, with an aim to increase their participation within the home and minimize missing behaviour.

All homes adults follow the missing from home procedure and policy for any incident where a housemate is reported missing (the information is readily available for all homes adults , in the SUE Solutions library).

The team at Thornbury House believe that a young person's safety and welfare is of paramount concern. It is therefore our priority to do everything possible to ensure the safe return of a young person. Housemates who go missing from Thornbury House without informing anyone, are reported to the police in accordance with our policy and in conjunction with Essex County Councils Missing Young People's Protocol. However, the team will ensure a search of the area is completed before reaching out to further resources. Thornbury House initiates a 'Live Chronology' built on the level of communication and proactive work conducted by the team members ensuring 'everybody' is involved attitude. Each housemate has an individual Missing Risk Plan based on their own circumstances, history and vulnerability. The continuity of recording and communication will be used to monitor and alert safeguarding concerns amongst the team. If, in the opinion of the home's adults , the absence of a housemate is more than a 'boundary testing' activity and they have taken adequate steps to find the young person, they will make a report to the police using the information in the Missing risk Plan. In all circumstances housemates are deemed vulnerable, this information will be passed to the police with immediate effect. All appropriate people (e.g. family, social worker) are informed of the unauthorized absence. On returning from a missing episode, a young person's safety is a priority and the home's adults will always check that the housemate is safe and well. If any information is gathered during the course of enquiries which indicates a housemate has placed him/her at risk then homes adults will inform the Police and Young people's Social Care immediately, so that they may take appropriate action. The Police will always give the housemate the opportunity to raise any concerns about their placement or other factors that may be linked to the missing episode.

The home will challenge appropriately if these are not being undertaken in the agreed timescales.

Bullying is not tolerated within our home, this is outlined verbally to the housemate when they first arrive at the home and they also receive a copy of the anti-bullying procedure within the Thornbury House young people's guide. Bullying affects everyone, not just the bullies and the victims. It also affects those who witness such behaviours and less aggressive housemates can be drawn in by group pressure. Bullying is not an inevitable part of life in a Young peoples Home; it is not a necessary part of growing up

## **Statement of Purpose**

and it doesn't usually "sort itself out". We will attempt to help all housemates recognise and respond effectively to bullying in other areas of their lives by means of intensive key working sessions. Occasionally an incident may be deemed to be bullying even if the behaviour has not been repeated or persistent – if it fulfills all other descriptions of bullying. This possibility should be considered, particularly in cases of sexual, sexist, racist or homophobic bullying and when housemates with disabilities are involved. If the victim is in danger then interventions are urgently required.

All bullying incidents will be taken seriously and responded to in the most suitable way. Our aim will be for the perpetrator to recognise and stop the behaviour and for the victim to feel safe.

Where a bullying incident or claim occurs, it is thoroughly documented and investigated by the Homes Manager. The team works hard to ensure that a suitable consequence is delivered and the right support is put in place to help the bully and their victim explore why it happened and how to avoid it happening again. In rare cases where bullying continues it is made clear to the bully that the consequence could mean they are moved out of the home

In Thornbury House bullying is set as an agenda item on the young peoples meeting so it is always discussed openly, and housemates have a forum in which to safely raise any issues they may have. It is rare that Thornbury House has extreme cases of bullying where verbal or physical threats are made but the home's adults are also very proactive in managing and confronting any 'underhand' looks or throwaway comments that are more commonplace and could also be classed as bullying.

In addition to this, impact assessments are regularly reviewed and there are always home's adults present in communal areas of the home to monitor peer interaction.

### ***HOW WE PROVIDE QUALITY CARE:***

We fully recognize that housemates have their own views, wishes and feelings, and that we must promote each young person's right to have a say.

The housemates within Thornbury House will be consulted about every aspect of their care. This will be done both formally, and informally using a variety of different means. No housemate is assumed unable to communicate their views; therefore, appropriate methods for gaining views will be sought and provided. Young person's views are sought during young people/s Keyworking sessions, manager consultations, reviews and planning meetings in addition to during debriefs after any incidents, physical interventions or missing episodes.

Each Housemate and housemates will be actively encouraged to participate in the development of their individual care plans, reviews and any other key meetings and will be supported and encouraged to ensure their views are heard.

The young person/housemates will have the opportunity to discuss, debrief and comment following any incident, consequence or use of positive physical intervention. This will consider how we can prevent this from happening again and how they would like to be supported. They will also have the opportunity to read and comment on their review reports, care and health plans and sign these to show they have been included.

## **Statement of Purpose**

The housemates will have regular 1:1 sessions with their allocated worker to discuss continued needs, progress, any issues and to set targets for the next meeting. Key working aims are to work closely with housemates on their care plan and encourage them to discuss what they want for themselves for both the short and long-term future. They discuss how they think they can reach these goals and what they feel they need to do in order to achieve this. In addition to this the key workers are more closely involved with the young person's care plans. They work with the young person, social worker and family members to ensure that they all have a say in the young person's care. They act as an advocate for the housemate and ensure that other homes' adults in the home are aware of the up to date plan for the young person's care. The key worker will also make an effort to be there for the housemate whenever they are needed; for example, if the housemate would like their keyworker to attend an event or appointment with them then the manager ensures this is accommodated for on the Rota.

The Registered Manager is always available for the housemates to speak to both openly and in private about anything that is troubling them. This is recorded in the Manager Consultation section in the young person's profile on Sue Solutions.

The home will have regular Young People's meetings to openly discuss together the operational aspects of the house. Housemates will contribute to these meetings and all housemates are invited to take part. These are housemates friendly and are age appropriate. Housemates are given the opportunity to make informal complaints both during and after the meeting. Minutes are kept as a record of discussions and outcomes. Thornbury House's agenda and meeting notes are created, and recorded by the housemates and uploaded to the young peoples meeting section on Sue Solutions.

Each housemate in the home is encouraged to personalize their bedrooms in line with their individual tastes and interests, and will also be consulted about the décor of the home and purchasing new items or re-decoration.

The housemates will also have regular monthly opportunities to discuss with the Regulation 44 inspector, any concerns or issues they may have about the quality of care in the home. Any comments or concerns are raised and discussed with the Manager and appropriate action will be taken in response.

The housemate is able to privately speak to the Wellbeing Team, and Residential Compliance Manager, who both visit the home weekly. The home's adults are also available by phone if the housemate wishes to speak to them on a day when they're not in the home. As they visit weekly, the housemates will have the opportunity to build trusting relationships with them. As these home's adults are external to those providing the direct support to them, they may feel more at ease in being able to raise any concerns they would like addressed.

A record of the views of housemates about the development of the home and the housemate will be regularly consulted throughout the year. Any ideas and suggestions put forward will be considered and the housemate will receive feedback from the consultation. This is in the form of consultation with the home's manager recorded in the Manager Consultation records.

## **Statement of Purpose**

The Homes Manager has regular consultation with professionals, families and significant others relating to the care of the housemate and operational running of the home as part of the Regulation 45 process. These consultations are collated, and reviewed, to see if any themes are apparent and to devise an action plan to work towards to improve the home, and support housemates receive.

The home's adults will ensure that any professionals and significant others including family where appropriate are kept informed of incidents, achievements and any concerns relating to the young person.

Formal consultation about the care and operational running of the home forms part of the monthly Regulation 44 inspection.

Within the home housemates are expected to participate within the Thornbury House routines and boundaries. The home's adults encourage that at meal times everyone sits down to eat together, and housemates are encouraged to participate in the home's events and activities. In addition to this, housemates are expected to contribute to the home by helping each other and homes adults will keep the home clean and tidy and a nice place to live. They are asked to take ownership of the home, contributing to decoration ideas both in their bedrooms and communal spaces if they wish to.

On admission, the Manager will go through with housemates the role of when external visitors visit the home to read their records as part of the Regulation 44 Visit process.

In Thornbury House we value the views and opinions of our housemates around potential new homes adults and feel it is very important to ask their opinion when selecting new homes adults to join the Thornbury House team. In addition to this the Registered Manager consults with the housemates on existing homes adults, gaining their views and constructive feedback to help homes adults improve on performance or to review and action any difficulties that the housemates may be having with any particular members of homes adults.

### ***HOW WE PROMOTE EQUALITY:***

We committed to equal opportunities and anti-discriminatory practice for both homes adults, and the housemate we look after.

Thornbury House seeks to deliver our services without discrimination. We welcome housemates from all parts of our community. Our Equality Statement demonstrates on-going commitment to ensuring all people are treated with dignity and respect, promoting equality of opportunity and ensuring discrimination is not present in either our service delivery or employment practices.

All homes adults will have equal access to training, supervision, support and promotional opportunities. Any stereotypical thinking in relation to age, gender, sexual orientation and able-bodied status will be challenged – we ensure none of these difference will affect an individual's position within the home or their access to achievement

## **Statement of Purpose**

At Thornbury House, we will treat each housemate as an individual and support them in a way that makes them feel safe, supported and respected regardless of their age, gender (including gender reassignment), sexual orientation, race, religion or belief, disability or culture. This will be considered as part of the Care Plan and Individual Placement Plan, to ensure we are best meeting the needs of all the young people. Housemates will be encouraged to participate in cultural activities from a variety of backgrounds in order to help them develop an understanding of the world around them.

It is recognized that on occasion, housemates will behave in a way that attracts consequences. If so, these will be applied consistently and fairly and in line with the guidelines provided by regulations. Homes adults are clear that the purpose of the use of consequences with housemates is to promote change and reflection, not to punish. A consequence record is also completed to ensure that the housemates are consulted and their views are considered with regard to the consequence and given an opportunity to express their views, and work to a compromise if that is appropriate

We believe that all people – colleagues, housemates and visitors should be treated with respect. Disruptive or offensive language/behaviour will not be tolerated and will always be challenged. When such incidents are perpetrated by young people, they will be worked with in a way that promotes better understanding and encourages a change of attitude and behaviour.

If housemates are subjected to discrimination they will be offered protection, comfort and support. We believe that all housemates are equally entitled to have their needs met and to be free from abuse and exploitation.

Each housemate will have a key worker who will explain to them their rights and consistently ensure that these are being met. There will be regular young people's meetings, where the issue of young people's rights will be discussed to ensure that housemates feel that they are being consulted, listened to and treated equally and fairly.

All housemates within the home will have the opportunity to access an advocate, and we will promote this to ensure the housemate is able to offload, and discuss any practice they feel has been discriminatory.

### **HOW WE SUPPORT EDUCATION:**

#### **Embrace**

The housemates resident in THORNBURY HOUSE will either attend SureCare's education provision (an Independent School, White Trees), a local mainstream school or specialist provision within the local community. It may be dependent on the young person's individual needs. A home tutor is sourced to provide education. In this instance the home will always encourage tutoring to take place within the library. This is to support the child/young person's education and home life being separate and to avoid any potential distractions that may arise if tutoring was to take place within a home setting. The staff team encourages the housemates in all educational activities and endeavors to ensure that all housemates have their individual educational needs met.



## **Statement of Purpose**

Regular liaison/meetings take place with the staff team and the teaching staff regardless of whether the child is at White Trees School or an external education provision. The White Trees Independent School Senior Leadership and Wellbeing teams are available to provide specialist support to the residential team in relation to the education of the housemates. If housemates are without an educational provision staff will work with virtual school to continually try to source one, but in the interim a timetable will be created and the housemates will be encouraged to engage in educational activities or activities that will support developing skills e.g. Health, Fitness, Social and independence.

Where appropriate, THORNBURY HOUSE and their education partners have informal handovers when they see each other at the learning environment and more formal ones take place in a meeting format. There is sustained communication through Emails and phone calls. On occasions, where it is deemed in the best interest of the young person, the home's staff sometimes offer 1 to 1 at school to help housemates and support their engagement at school.

### **Engage**

THORNBURY HOUSE will work closely with each school and ensure they have a firm understanding with the school's rules, behaviour management and reward systems. This is so that these can be supported consistently from both home and school. Each time a young person refuses to attend education staff will discuss this with the young person to ascertain what the problem may be. The home will also contact the school and give an update.

THORNBURY HOUSE will engage the housemates in developing a healthy routine which will support them with accessing education. The home's staff will support the housemates with preparing their school uniform and, if required, a packed lunch (the home also pays for or provides for school lunches where applicable to meet the needs of the housemates). This will also provide the housemates with learning opportunities which can furthermore, equip them with independence skills. The housemates will be supported with getting up on time for school to provide them with time to get ready and attend on time. Providing the housemates with plenty of time to engage in their school routine will help support alleviating any emotional stresses.

THORNBURY HOUSE will notify the school of any incentives that have been put in place to encourage the young person to attend in future and will also request work be sent over to the home for the young person. If the issue persists the home will organize meetings with the school to formulate an action plan or discuss whether an alternative placement needs to be found. The number of absences a young person has is logged. This summary is used to update the social workers and also to track the young person's progress in both education and all other areas. This allows any patterns or problems to be highlighted early and tackled before they escalate. It also allows any praises to be celebrated both in terms of attendance and achievement at school.

Whenever a young person achieves a goal within the education setting, the home's staff always ask the young person if the certificate can be displayed in the home. If the young person does not want this the certificate is stored securely in the young person's life story or file. The certificate is valued by the

## **Statement of Purpose**

home's staff and this in turn increases the pride the young person has for achieving it. The home will also record any goals achieved within an education setting as a golden moment or achievement. The home also recognises golden moments and achievements with a reward system and will offer monetary or activity related rewards for any housemates who regularly attend education, work hard and achieve. They also make sure that positive feedback is passed on to parents, social workers and other relevant individuals.

### **Encourage and Educate**

As mentioned above, THORNBURY HOUSE considers education to be very important to a young person's future chances in life so therefore place great emphasis on supporting the housemates in attending school and engaging with the work. In addition to this we see opportunities outside the school day to increase learning; this may be completing homework, talking about the news/current affairs, work experience or informal learning around social/independence skills. We also operate a reward system (Pathfinder) for all housemates in education which may vary between each young person depending on their level of behavior and need but ultimately will centre around promoting engagement with education and recognizing achievement in this area. All housemates are given the clear expectation to attend school and this is promoted through a 24 hour curriculum.

Individualized timetables are put together with the THORNBURY HOUSE team, school and placing authority to ensure that it is child centred and ensures that they have the opportunity to engage in activities dependent on their own hobbies and interests. THORNBURY HOUSE works closely with the education provider and offers planning meetings and strategy meetings, to help explore why a young person may be behaving in a certain way and help to gain a consistent approach to make the young person feel safe and better able to engage.

### **Enrich and Empower**

Residential courses, after school clubs, school trips and activities are sourced ranging from sport and adventure to performing arts and staff are proactive in encouraging and supporting housemates to attend. The common aim of each activity and residential course is to have fun, enjoy the adventure and excitement of challenging new activities with an emphasis on improving self-confidence, self-esteem, social skills, trust, responsibility and awareness for others. There are a wide range of activities and clubs currently on offer to support housemates life and social skills. Housemates are offered the opportunity to support the decision making about the range of clubs offered. These take place through consultation with the school manager and/or the Homes Manager.

The local Library is 10 minutes' distance from the home and all housemates are encouraged to join. This provides a safe place for housemates to research and learn through the use of books or get away from the distractions that home can sometimes provide.

## **Statement of Purpose**

THORNBURY HOUSE also pays for or provides for school lunches where applicable to meet the needs of the housemates can have an additional area within the home separate from the lounge for all housemates for study purposes if required. This may also be in the form of a desk within their bedroom. THORNBURY HOUSE staff will encourage the housemates to complete any homework or required studying to support further learning. The home staff are available to empower the housemates by offering support, advice and guidance with any additional learning set by their education setting. Should any additional resources be required such as learning books or a laptop then the home staff will liaise with the child/young person's school or if necessary virtual school.

### ***THE FUN THINGS FOR OUR YOUNG PEOPLE:***

Thornbury House aims to provide a broad range of opportunities for all the housemates and housemates to participate in leisure and recreational activities. This is to give them as wide-ranging experience as possible to potentially find a talent or interest that can be pursued. The preferences of the housemates will be taken fully into account in deciding on activities through young people's meetings and sessions with key workers. Housemates are encouraged to bring ideas and suggestions about activities or hobbies they would like to pursue. Within the local area there are swimming pools, theatres, leisure centres, bowling, cinema, countryside parks and woodland walks, shopping centres, golf, paintballing amongst other things.

Housemates are encouraged to access local activity groups and social clubs of their choosing for example, scouts or guides, cadets, dance/performing arts clubs or youth clubs as part of their social development and to enable them to actively participate in community living. Where housemates may struggle in a social setting the home's adults think creatively to try to increase a young person's ability to engage in community groups or by providing individual opportunities which could be a stepping stone to the bigger goal of community integration. Thornbury House aims to have an annual holiday during the school holidays. This is done in consultation with the young people's wishes and feelings and the housemate are kept involved in the planning of the holiday activities and events, great care is taken by the homes adults team to ensure that all young people's views are heard and where it is felt appropriate separate holidays can be undertaken to try to ensure every housemate gets the opportunity to experience a holiday. Housemates may choose to participate in a week away where the housemate can participate in outward bound activities, for example, abseiling, climbing and canoeing or camping trips. Consent is sought from the local authority and parents, where applicable, prior to a housemate participating in such events. All housemates resident in Thornbury House will be encouraged to participate in these activities to help build on their own self confidence and self-esteem and experience life outside of the residential setting.

### ***SUPPORTING HOUSEMATES WITH THEIR HEALTH:***

All home's adults are trained in the administration of Emergency First Aid and will have refreshers when required, in line with our requirements.

Information for NHS direct and local health provisions are available to homes adults to support housemates to access. The home's procedure is that all health problems no matter how small should be

## **Statement of Purpose**

checked out by a professional and the home's adults should support and encourage housemates to access a health service. Every health concern is recorded in the young people's profile on our system under 'chronology of illness', and any appointments will be documented under 'record of appointments' on our system also. Accident forms, body maps, and self harm logs are also accessible on our system. If a housemate refuses appointments, or medical attention this will be documented.

When a housemate moves in they are registered with local health professionals. The home always (when possible) refers housemates to the same doctor, dentist and opticians; this means that the home's adults can be confident in the quality of health care provided. In addition to this it helps the home's adults to build up a rapport with local health professionals irrespective of the length of the young people's placements. If possible and appropriate housemates may choose to remain at their own health services.

In terms of promoting the housemates to lead a healthy lifestyle, the home encourages housemates to try different activities or types of exercise, or continue ones they have shown interest in already. Homes adults will equip housemates with the knowledge and skills in how to create for themselves a healthy lifestyle, this can be done through keyworking sessions.

Every housemate has details on their profile that covers their medical history, allergies, diet, exercise, personal hygiene and physical and emotional health. This is developed and shaped by the young person's views and needs and also takes into account the views and health information provided by parents and the local authority.

The company also has a Wellbeing Team who are available to work with housemates and homes adults on any issues related to psychological and emotional wellbeing.

### ***OUR WELLBEING TEAM***

SureCare's Wellbeing Team is committed to providing a service which helps create an environment where housemates can fulfill their potential and a system which can effectively and appropriately meet their emotional & mental health needs.

The underlying principle in our work is that a young person's social, emotional, intellectual and psychological functioning and the behaviours they exhibit can be understood in the context of their early childhood experiences and their life history.

We at SureCare adopt a holistic view which privileges the social inclusion, achievement, quality of life, and developmental stage of the housemate and the promotion of positive relationships with the people who care for them. The Wellbeing Team works across both our Residential's Homes and our School. The team is led by the Head of Wellbeing and Education. Our Therapeutic Intervention Leads, Assistant Psychologist, SENCOS and Consultant Clinical and Educational Psychologists provide expertise and support. Our consulting Clinical Psychologist visits our Head Office weekly and joins the Wellbeing team to provide clinical supervision, support and advice as needed.

## **Statement of Purpose**

Our Therapeutic Intervention Leads manage a caseload of four residential homes each. In these roles these members of the Wellbeing team visit each of their homes weekly, spending time with both adults, and young people. They inform the homes adults ' therapeutic practice and work directly with individual housemates to provide support and build positive relationships. These are alternative and additional sessions to key working sessions, concentrating on identified areas of development from the 'Assessment and Treatment Plans' and the young person's goals. The Therapeutic Intervention Lead will also oversee therapeutic targets and different psychological assessments (informal and formal).

### ***OUR THERAPEUTIC FRAMEWORK***

#### **Embrace**

The Wellbeing Team is part of welcoming new housemates from when they first arrive in the home.

Placement Planning -The Therapeutic Intervention Lead will liaise with home managers to be part of the Placement Planning Meeting and will meet the housemate within their first few days to begin to build positive rapport with them.

The Therapeutic Intervention Leads will collate all referral information into a Psychological Formulation and formulate the Initial Assessment and Treatment Plan report completed by each young person's social worker. The Therapeutic Intervention Lead will facilitate assessments in order to inform planning of individualized therapeutic strategies and interventions. This includes the Assessment and Treatment Plan, the Coping Inventory for Stressful Situations [CISS] and the Resiliency Scales [RES] assessment. The CISS and the RES will be scored by our Consultant Clinical Psychologist. The Therapeutic Intervention Lead will share these reports with the home's adults and provide support to implement recommendations as appropriate. It is our aim to complete all the initial assessments within 8 - 12 weeks of a Housemate arriving in the home.

#### **Engage**

Our Therapeutic Intervention Leads are allocated a caseload of four homes. It is expected that they spend time each week at their allocated homes. This time is essential for enabling the development of positive working relationships with both the home's adult team and housemates within the home.

Our Therapeutic Intervention Leads will develop, implement and review Goals for each of the housemates in our homes. These goals are individual to the housemate and align with the domains within the assessment treatment plan - including but not limited to Communication, Education/ Apprenticeship / Work, Family and Attachment, Health and Self-care, Identity and Emotionality, Sociability and Behaviours. The Wellbeing Team closely works with the home's adults to engage and support the housemates to strive towards achieving these goals, which may be short, medium or longterm.

Each of our homes has an designated Wellbeing Lead who will meet each fortnight with the Therapeutic Interventions Leads to manage assessments, interventions and reviews.

## **Statement of Purpose**

### **Encourage**

Our Therapeutic Intervention Leads will spend time getting to know each housemate in our homes. Once they have built trust they will encourage the housemates to engage in 1:1 or group Wellbeing Sessions on a regular basis. Individual therapy can be accessed if required and appropriate, and the Wellbeing Team will ensure an appropriate professional is found to deliver this. Some of the therapeutic sessions that could be implemented either by the Wellbeing Team or through external providers are - Play Therapy, Art Therapy, Music Therapy, Speech Therapy, Counselors, Psychotherapists, Lego Therapy, Animal Therapy

Our Wellbeing Team encourages our home's adult teams to reflect on their practice, to speak up when they need targeted education and/or support. Adults in the homes also engage in positive activities (including trips away), Deconstruction of thoughts and feelings through Key Working Sessions, which promote the development of overall Health and Wellbeing of housemates in the home.

### **Equip**

The Wellbeing Team and home's adults endeavor to equip the housemates with the necessary skills to thrive as adults in the community. Adults in the home assist the housemates to develop communication skills at the right level depending on the young person's needs so they are able to build positive relationships with adults and peers.

Our homes are placed where housemates can begin to feel safe and secure. This is achieved through a focus on providing predictability, routine, visual, Information, keeping your word, spending time together, turning up, emotional boundaries (Professional, Personal and Private), reflection, cooking/cleaning, role modeling and a common Interest to demonstrate relatability

Furthermore, the home's adults are committed to developing the young people's understanding and adherence to clear boundaries, consequences and rewards and restorative justice.

### **Educate**

Within each home we offer a rich array of programs to support the development of physical, mental and emotional wellbeing of each of our young people.

The Wellbeing Team provides regular and ongoing Professional Development from the point of Induction. Topics that are covered are Developmental Trauma and Attachment and Communication Strategies for housemates in crisis. Further training across a variety of topics can be facilitated on a case by case basis either company wide or in team meetings.

Our Wellbeing Team will be present at the monthly team and managers meetings in order to provide assistance and advice to the home's adults.

Home's adults support the education of housemates by regularly helping with homework, Pathway and Transition into school and Information sharing with school homes adults.



## **Statement of Purpose**

### **Enrich**

The Wellbeing Team facilitates extensive training for our home's adults . They are also able to offer Reflective Supervisions for the homes' adult teams or small groups to provide scaffolded support as needed.

Home's adults and the Wellbeing Team work together to plan for housemates to engage in hobbies and the wider community. The Wellbeing Team provides a Monthly Theme with resources, tips and challenges that further promote this. For example, the Theme could be Nurture and Growth. This theme encompasses how we can nurture our minds and bodies. It encourages us to think of daily habits that nurture our bodies and develop a Growth Mindset in order for us and our environment to thrive.

### **Empower**

Our Wellbeing Team will provide training for both residential and school homes adults to empower their knowledge around certain topics and provide support to homes adults when needed.

Furthermore the Wellbeing Team and home homes adults promote giving a sense of control to housemates by providing them information to make informed choices, advocating attendance and/or participation at meetings/reviews, complaints process, exploring values/what's important to the young person, young people's meetings.

Home homes adults also provide support in maintaining family relationships where appropriate and support following contact, which is individualized to young person.

### ***ENCOURAGING POSITIVE RELATIONSHIPS:***

Where possible we encourage and promote positive contact for the important people in our young people's lives. We support the housemates to do this in a variety of ways, either in person, or using other methods such as letter or video calls.

When a housemate comes to live at Thornbury House, during part of the placement planning meeting we will discuss with the housemate who they feel is important to continue contact with, the social worker and other professionals or family members who may be present will also be given the opportunity to discuss their views. Once the views of everyone present has been shared we will implement a plan that promotes positive contact, but includes any restrictions also to safeguard the young person. Everyone present will be aware of what the contact plan is, so we can support the housemate around contact from the start, not leaving them wondering or waiting for what will be in place, as this can cause upset for the young person, impacting their settling in period. Housemates can use the home phone to make private calls if agreed, and there will be times in place for this, other than in emergency situations.

## **Statement of Purpose**

If appropriate we will welcome a young person's family or friends to visit the home providing it doesn't impact any visitors, homes adults or young people's safety. Where not appropriate homes adults will support in arranging other venues so contact is still maintained.

In the lead up to contacts, immediately before and after, homes adults will offer support to housemates as we are aware contact can impact housemates differently due to mixed emotions and coping mechanisms around their feelings. Homes adults can also offer support to the family if appropriate.

There are policies in place surrounding the use of door alarms within the home. The policy is reviewed annually. These door alarms are in place to ensure the safety of housemates within the home – and not as a behaviour management tool. The door alarm is triggered in the home's adults sleep in room to alert the home's adults to housemates entering / exiting a room – this does not disrupt the rest of the home. Aesthetically the alarms are as subtle as possible to maintain our homely environments.

- Such devices may only be used if set out in relevant Young Person's Placement Plans.
- Every effort is made to ensure the young person's privacy, dignity and rights whilst the system is in use.
- Their use is assessed on an individual basis, agreed to in the care plan by a social worker and via consent sought prior to admission or the placement planning meeting.
- The child is made fully aware of their use via the young person's handbook, and placement planning meeting, and the reasons why the decision is made. If there is an opportunity to do this prior (such as through transition visits) they can be notified then also.
- The use of the door alarms is reviewed regularly as to their appropriateness of use.

Door alarms are not set until the child/housemate has settled to bed for the night. Door alarms are to only be set in line with the risk assessment in place, and all homes adults are to be aware of the risk assessments for each child/housemate and the home. Each child/housemate will have an individual risk assessment regarding the use of door alarms – as not all housemates will require them at all times.

All homes adults are shown during induction how to operate the door alarms. If the door alarm is activated, then the home's adult who is alerted should respond and take appropriate action.

Generally when the alarms go off we get to know the pattern of our young people's routines, so if the alarm sound is uncommon for them, or they have not returned to their room for longer than expected, homes adults can check to see if the housemate is ok. If needed, the home's adults can ask for assistance from the other sleep in home adults. Once the housemate has returned to settle, homes adults can reset the door alarms when they return to their sleep in room.

This measure will further safeguard the housemates by letting homes adults know should the housemate leave or enter a bedroom and enable appropriate levels of supervision to minimize the risks of bullying or harm.

The use of door alarms is recorded in the Statement of Purpose which the Social Worker and any significant others will receive a copy of prior to placement.

## **Statement of Purpose**

Door alarms will not be used as a monitoring device, and are not a behaviour management tool and as previously mentioned only be set once a child/housemate has settled into their bedroom for the night. Usual practices in ensuring the legitimate privacy of the child/housemate i.e. when using the toilet etc. will be observed.

Homes adults must record any incidence of door alarms being activated during the night in the home's running log and homes adults must respond to any alarm. Homes adults are to ensure they discuss and agree who is responsible for setting/resetting the alarms at night.

The purpose of the door alarms will not be to punish or supervise the child/young person, but to ensure appropriate levels of support and guidance are available overnight, or as additional security to highlight to homes adults if doors to the Home are opened.

The Manager will monitor and review the use of door alarms to ensure their use remains inline with policy and risk assessments.

When caring for housemates who display challenging behaviour, it is sometimes appropriate to use physical intervention as a method of care, to ensure the safety of the child/housemate and those who care for them.

Physical intervention is always a last resort, after all other interventions have been exhausted. All homes' adults receive training during induction and ongoingly in understanding challenging behaviour, and are equipped with ways to support housemates in times of difficulty.

The physical intervention techniques taught to the home's adults are based on NFPS training (National Federation for Personal Safety) and home's adults having received instruction in this method, hold a relevant certification and work book on their home's adult profile. The home's adults attend the course for 2 days which is delivered by qualified instructors within SureCare who can also support, offering advice & insight into the workings of our homes. Homes adults also attend refresher courses to ensure homes adults feel confident and are competent in the methods.

Physical intervention is used only as a last resort when all other interventions have failed. Physical intervention is a reality of our work, but Thornbury House, in line with the SureCare policy, works hard to decrease the need for intervention. All incidents of physical intervention are recorded; they are then read and signed/reviewed by the Registered Manager, or the Deputy Manager in their absence. The antecedents are important in ensuring all responses are appropriate and in line with the risk assessment and young person's behaviour plan. Any consequences given to a child following any challenging behaviour will be recorded and checked to ensure appropriate responses are used.

The Management team in the house ensures that each physical intervention is followed with a debrief with the housemate and debrief with the members of the home's adults involved. When monitoring incidents, the Management team give emphasis to thinking about the incident details (time, date etc.), the young person's motivations and homes adults dynamics to try to give an overall therapeutic point of view of why it may have happened and to highlight any work that may be needed to resolve it, to

## **Statement of Purpose**

prevent further occurrences, and also to encourage homes adults to reflect on responses to managing behaviour to ensure they are right for our young people.

Consideration of the young person's deprivation of liberty, is always given when there is a requirement for use of physical intervention. This will also be considered within the young person's care plan where at times supervision is required for a housemate outside of the home. There are times where the homes adults will be required to closely supervise a housemate for their own safety when they leave the home. In such situations this measure/management strategy will be documented and referenced within their written care plan and risk assessments so as to show a planned and reviewed approach to safeguard the young person.

It is acknowledged that such an environment and working model will inevitably, on occasion, result in an allegation of some nature against the home's adults. In these circumstances, child protection procedures apply and are followed accordingly. Both adults and the child/housemate involved in the use and application of any physical intervention are debriefed following the incident and are offered medical attention. The child/housemate will be closely monitored by the home's adults following any physical intervention. Homes adults are taught during the training that our aftercare (of a restraint) starts as soon as we touch a housemate to safely hold them.

### **OUR TEAM:**

The details of our home's adult structure within SureCare Residential can be found below. This details who is within the team, and who directly manages each home's adult.

Below is also a table detailing our current full time, and Wellbeing, homes adult teams, their qualifications relevant to their roles (for the full training tracker, detailing all training completed and all training requiring completion, please see the homes Training Tracker found in the homes folder on Google Drive).

All home's adults have regular supervision with their Line Managers. Supervisions with Thornbury House are completed by the Homes Manager, and Deputy Manager. The Homes Manager is supervised by the Residential Compliance Manager monthly.

Homes adults are encouraged within their supervision to be open, honest and reflective to look at the young people's needs and behaviours, and to improve their practice with the housemates and develop themselves. The sections discussed in supervision are:

- Review of personal practice – a place to reflect upon their own ways of working, and anything impacting this since their last supervision (either within the home, or personal).
- Review of all Housemates – to discuss how they feel each housemate is progressing, and identifying any barriers with this, and suggestions on what needs to be in place to support the housemate to continue to achieve their goals.
- Keyworker/Senior Review - reviewing their duties and responsibilities within these roles where appropriate), and identify any shortfalls (if any).

## **Statement of Purpose**

- Feedback on the team – a discussion around how each individual homes adults feel the homes adults team are working, identifying strengths or any areas for development.
- Supervisor feedback on performance – Managers will provide feedback on how the homes adults have been working since their previous supervision, and discuss any areas they are excelling in, and also areas for development.
- Reflection on working within the White Trees Way – homes adults will give their opinion on how they are implementing the White Trees Way model within their practice.
- SUE/Paperwork review – review of all paperwork completed by the home's adults identifying any areas where further coaching is needed.
- QCF Review – review of the progression towards the home's adults QCF qualification, any barriers in achieving things and support with any modules they may be struggling with.
- Training/Development Review – a full review of all training completed by homes adults, and any which is outstanding (with an action plan developed for this). We have Competency Trackers which we use for all homes adults (tailored to each role), which we review here. The Competency Trackers enable homes adults and Managers to identify specific areas which they need more support to be competent in, and how this support will be provided.
- Sickness/Absence Review – to review sickness/absence of the home's adults, and anything which may be affecting this (both within the home, or personal).
- Safeguarding – Managers ask the homes adults to reflect upon any safeguarding concerns within the home since their last supervision (and debrief on this when necessary). Managers also ask regular questions in this section, to get a full understanding of the home's adults knowledge of this.
- Any other business – to discuss anything else the homes adults, or Manager, would like to raise.
- Action Plan – an action plan is developed here, to include any actions required following the above conversations.

All homes adults are able to access Therapeutic Supervision with the Consultant Clinical Psychologist when they feel this is needed. Homes adults are able to use these sessions to reflect upon behaviours/relationships within the home, but also if they have any personal issues they would like to work through.

New homes adults have a 24 week probation period. Within this, their Induction Competency Trackers are used to detail when they have been assessed to be competent in specific areas (discussed with the home's adults within their supervision). There is both a 12 week, and 24 week, Probation review record which is completed by the Manager with the home's adults in these timescales. This is a space to discuss how the home's adult feels they are working within the home, and the Manager will reflect whether the home's adults are working towards the expected standard. Managers can use these meetings to set targets for the homes adults to achieve, to enable them to successfully complete their probation period.

Thornbury House prides itself on creating a homely and relaxed atmosphere, where the home's adults respect that they are working within the young people's home every day.

## **Statement of Purpose**

We ensure that we employ a varied home's adult team, with a mix of different genders, differing ages, sexual orientation and a wide range of cultural backgrounds and beliefs, and different backgrounds/personalities.

The recruitment process (and rota management) within the home ensures that there is the required skill, experience and personality mix to meet the individual and charismatic needs of the young people.

All our home's adults are great role models for our young people, and we allocate key workers to the housemate based on who we feel they will match best with.

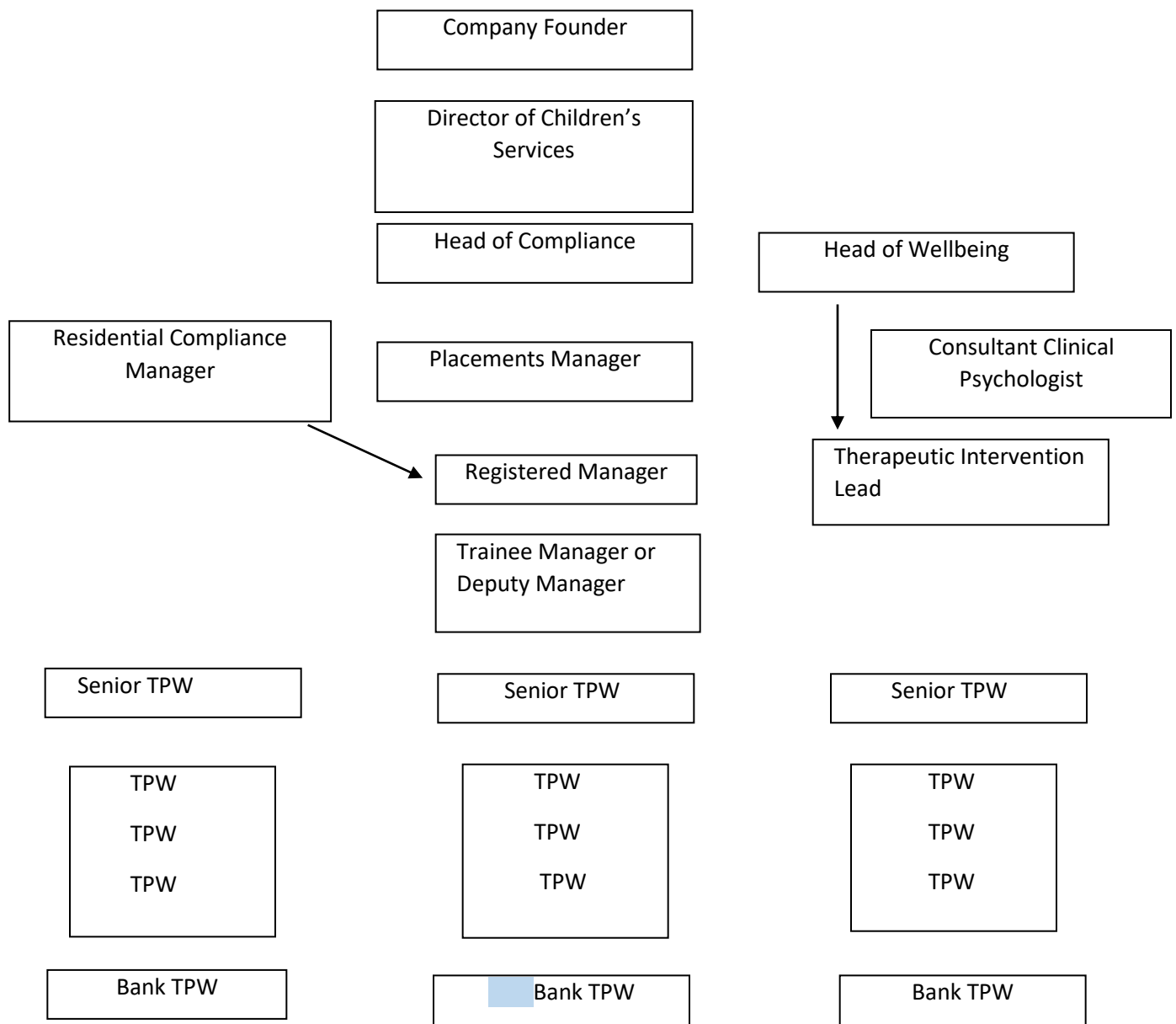
.



## Statement of Purpose

### Management and Homes adults ing Structure

#### SMT/ Organisation



## Statement of Purpose

The below table shows the training we offer and is provided to all homes adults (in relevant roles). This also includes the timescales that these should be completed by, for all new homes adults .

<b>INDUCTION TRAINING (within first 2 months of employment)</b>	<b>MANDATORY ONLINE First week / within 3 months of probation</b>	<b>SPECIALIST MANDATORY ONLINE (Within 6 months)</b>	<b>REGULATORY (After 6 months)</b>	<b>BESPOKE/ROLE DEVELOPMENT (As required ongoing) All coaching sessions by RHM's – Highlighted are delivered training sessions.</b>	<b>LEADERSHIP &amp; MANAGEMENT (As required ongoing) Delivered by AP, RG, DE, MT, KR</b>
<p>DAY 1 – Intro into organisation. Understanding White Trees Values, ethos &amp; professional boundaries. Key working, whistleblowing.</p> <p>Day 2 – Understanding effective behaviour management.</p>	<ul style="list-style-type: none"> <li>● Safeguard / CP.</li> <li>● Food hygiene.</li> <li>● Health &amp; safety.</li> <li>● Housemate exploitation</li> <li>● Raising awareness of trafficking &amp; modern slavery.</li> <li>● Equality &amp; diversity.</li> <li>● Awareness of housemate on</li> </ul>	<ul style="list-style-type: none"> <li>● FGM.</li> <li>● The prevent duty.</li> <li>● Online safety.</li> <li>● Raising awareness of LGBT.</li> <li>● Looked after young person.</li> <li>● Mental wellbeing in YP.</li> <li>● Safer recruitment (RHM &amp; DHM ONLY).</li> </ul> <p><b><u>NEEDS LED AS DIRECTED BY MANAGEMENT:</u></b></p> <ul style="list-style-type: none"> <li>● Substance misuse.</li> </ul>	<p>Diploma in young peoples residential workforce – Level 3</p> <p>Diploma in leadership &amp; management – Level 5</p> <p>Safeguarding level 3 - Designated safeguarding lead</p>	<ul style="list-style-type: none"> <li>● Understanding your role &amp; responsibilities.</li> <li>● Effective report writing.</li> <li>● Effective shift planning &amp; understanding the function.</li> <li>● Understanding looked after young person.</li> <li>● Managing the environment.</li> <li>● Key working in practice.</li> </ul>	<ul style="list-style-type: none"> <li>● Effective reflective supervision.</li> <li>● Managing homes adults (conflict &amp; difficulties).</li> <li>● Informed decision making.</li> <li>● Leading &amp; managing a team of people (difference between L&amp;M).</li> <li>● Accountability &amp; task management.</li> <li>● Rota management.</li> <li>● QA.</li> <li>● Procedures/managers monitoring.</li> </ul>

## Statement of Purpose

<p>Educare &amp; SUE solutions.</p> <p>Day 3 – Developmental Trauma and PACE, Communicating with Housemates in Crisis. Wellbeing Team, Assessments and Interventions</p> <p>Day 4 &amp; 5 - NFPS</p>	<p>housemate abuse.</p> <ul style="list-style-type: none"> <li>Prevent</li> <li>Bullying.</li> </ul> <p><b><u>EXTERNAL TRAINING / FACE TO FACE:</u></b></p> <ul style="list-style-type: none"> <li>Medication training &amp; assessment.</li> <li>Emergency first aid at work.</li> <li>Fire Marshal.</li> <li>Ligature Training</li> </ul>	<ul style="list-style-type: none"> <li>Overcoming loneliness.</li> <li>Harmful sexual behaviour.</li> <li>Autism Awareness.</li> <li>Understanding Diabetes.</li> <li>Understanding Epilepsy.</li> <li>Understanding Asthma.</li> <li>Understanding Anaphylaxis.</li> <li>Dyslexia awareness.</li> <li>ADHD awareness.</li> </ul>		<ul style="list-style-type: none"> <li>Incident management &amp; debrief.</li> <li>Missing from care management.</li> <li>Using the intranet.</li> <li>Pathway Planning &amp; Supporting independence.</li> <li>Supporting education (SEN/EHCP'S).</li> <li>Care planning/risk assessing process.</li> <li>Rewards &amp; consequences (Effective incentives &amp; behaviour modification strategies).</li> </ul>	<ul style="list-style-type: none"> <li>Overseeing key working &amp; care planning.</li> <li>Effective debriefing.</li> <li>Admissions, discharge, and transitions of placements.</li> <li>Regulation 40 process.</li> <li>Reg 32 – monitoring and reviewing homes adults performance (induction, probation, supervision, and appraisal).</li> <li>Implementing policy &amp; procedures.</li> <li>Regulatory frameworks (QS, young people's regs, SCIFF) and implementing frameworks into practice.</li> <li>Mentoring &amp; coaching new homes adults &amp; existing homes adults development.</li> </ul>
--	---	---	--	--	---

The following table show our current Full Time Homes adults team, and Wellbeing Team, with relevant qualifications, information regarding their experience, and their future plans (with Management input for their view on current homes adults performance, and what will be put in place to support their development).

## Statement of Purpose

NAME OF HOMES ADULTS	POSITION HELD	RELEVANT QUALIFICATION	EXPERIENCE & FUTURE PLANS FOR QUALIFICATIONS
Emma Barr	Responsible Individual	<ul style="list-style-type: none"> <li>• NVQ Care Level 3</li> <li>• Child Protection Designated Person (Level 3)</li> <li>• PTLLS Level 3 Award – Trainer</li> <li>• Level 3 Award Health &amp; Safety in the Workplace</li> <li>• First Aid Trainer &amp; Assessor</li> </ul>	Emma - has worked with Looked after Children & across social care and education for more than 20 years. Emma is a strong advocate for children and believes that all children should be supported to reach their full potential. She effectively uses her own and the skills and vast knowledge of SureCare Senior management team She has used to improve the outcomes for children. Emma began her career at SureCare in 2008 as Office Manager, when founded with her husband. She progressed as Director of Operations when she decided to have more presence within the company.
Tina Twyman	Registered Manager	QCF Level 3 QCF Level 5 DSL 30.5.23	<p>I joined the Whitetrees Group in April 2015 as a TPW. I had never worked in this sector before but felt that it was something that I would enjoy and hopefully be good at.</p> <p>I took advantage of all of the training that was supplied by White Trees and outside agencies and gradually my experience and confidence grew. Today I am the Registered Manager of the home that I began my career in. I have been encouraged all the way by my colleagues and the senior management team who have offered support and guidance all of the way through my journey.</p> <p>Since being with the company I have gained my level 3 and level 5 qualifications.</p> <p>I am committed to working with the housemates and families in a professional, non judgemental and honest manner to ensure that not only are the housemates given the best opportunities, to feel loved, safe and cared for but also for the best outcomes.</p>
Rachael Forrest	Deputy Manager	QCF Level 3 QCF Level 5 – currently working towards	I have worked in children's homes since September 2007. Prior to joining White Trees I have managed homes in 2 different companies. In July 202 I joined White Trees starting my career as the deputy homes manager of Lymington House. Following a period of maternity leave I joined Thornbury House in the same capacity.

## Statement of Purpose

			<p>Through my time working in both of these homes I have gained a greater understanding of working in a more therapeutic way with children who have experienced trauma and adverse experiences. I have undertaken a leadership training course provided by the local authority and have an Elklan level 3 qualification in communication and have my level 3 diploma. I am currently working towards my level 5 in leadership and management. I would like to support my manager at Thornbury to maintain its good Ofsted rating. I have a passion for working with housemates and love to see them progress and achieve positive outcomes and also for developing teams.</p> <p>I would eventually like to manage my own home within the company which I believe is my next natural progression when the time is right and my future all time goal is to get an outstanding rating in a home that I am managing.</p>
<b>Leeanda Parker</b>	TPW	QCF Level 3	<p>I have worked for Whitetrees for 7 and a half years. I enjoy working with all of the teams and the deputy and manager. I enjoy working with the housemates and watching them progress into becoming independent by learning life skills, attending education and making positive choices about their future. I enjoy my role as a TPW, I see myself continuing to work for Whitetrees until my retirement.</p>
<b>Shannon Scott</b>	Senior TPW	Enrolled QCF Level 3	<p>I joined Thornbury House in November 2021 after not having any experience in the role before. I felt nervous to begin with but the whole home's adults team and head office made me feel very welcome. I was offered the chance to be a key worker fairly quickly and really enjoyed doing this and learnt so much. I was then offered the opportunity to become a senior and I am currently learning the role which I am enjoying.</p> <p>I would like to complete my level 3 which I am enrolled on and develop myself further so that I am fully confident in my role and will happily take on any further training to complete this.</p>

## Statement of Purpose

<b>Henry Brown</b>	Senior TPW	QCF Level 3	I've worked in social care for 19 years. I've worked with both adults with complex needs and children and housemates both in residential, hospital and school settings. I have completed my level 3 in both adult social care and children and young people's care. I have experience at senior management level and wish to complete my level 5 in leadership and management.
<b>Lizzie Camp-Shonibare</b>	TPW	Enrolled on QCF Level 3	My experience within the company has been adventurous managing to progress my strengths. I have gained confidence and strength within myself everyday at Thornbury House with support from my previous deputy, my deputy now and my home's manager. Having a strong manager has allowed me to work on areas that needed progressing from when I started and I have managed to overcome difficult situations. I have managed to mentor other colleagues in the TPW role. I enjoy having the experience of shift planning and knowing that the day has gone well through the hard work of the team. I am working through my level 3 qualification and have been told that I have potential to become a senior in the home. I will continue to work hard within my role and hope to complete my level 5 one day. The training within the company overall is great, having Educare as well as physical face to face training supports this as things can change quickly.
<b>Lauren Willsher</b>	TPW	on maternity leave	on maternity leave.
<b>Rebecca Lee</b>	TPW	in probation period	Since being at White Trees I have really enjoyed my time there, even during times when I can find it stressful and hard. I love the support from the team members and the company itself. I also really enjoy the company of the young people. I can see from my experience already that this is a job that ~I wish to pursue as a career. I am willing to learn and will complete my level 3 so that I can push myself as far as I can in my now chosen career.



## Statement of Purpose

<b>Rebecca Carter</b>	TPW	in probation period	Before working at Thornbury I worked with vulnerable children with learning difficulties. I learnt all about safeguarding, working with LAC, keyworking responsibilities and in general how to love and care for the children I work with. My passion is working with children and I always hope to make a difference with every child I work with. I am excited to expand my knowledge and continue working with children. I look forward to completing my level 3 when my probation is finished.
<b>Alex Parkinson</b>	TPW	Enrolled on QCF Level 3	Before joining Surecare/White Trees I was a prison officer for 3 years. I have been with the company now for over a year (with a small break in between). I have met and worked with some great people and housemates and have worked at 2 different homes. I am currently working towards my level 3 qualification and I am hoping to complete this within the next 6 months. Next step for me is to continue to settle into my new team and work towards a senior role.
<b>WELLBEING TEAM</b>			
<b>Reeta Newell</b>	Clinical psychologist	<ul style="list-style-type: none"> <li>• Doctor of Clinical Psychology (DClinPsych) – University of East London</li> <li>• Bachelor of Science in Psychology (BSc) – London Metropolitan University</li> <li>• Practitioner Psychologist with Health and Care Professions Council (HCPC)</li> <li>• Chartered Psychologist (CPsychol) with The British Psychological Society</li> <li>• Member of The British Psychological Society Division of Clinical Psychology</li> <li>• Associate Fellow (AFBPsS) status within The British Psychological Society</li> </ul>	<p>I am an experienced Clinical Psychologist, registered with the Health and Care Professions Council (HCPC) and a Chartered member of the British Psychological Society (BPS). I specialise in working with children, housemates and their families. I also work with adults and couples. I provide psychological assessment, consultation, formulation and therapy in a private clinic in Bishop's Stortford. With over 10 years' experience of working in the NHS, most recently in a north London child and adolescent mental health service (CAMHS).</p> <p>I am committed to working with individuals and families in a professional, non-judgemental and honest manner. I do this by using modern, evidence based psychological approaches, building on individual and family strengths and resources.</p> <p>I have a special interest in autism spectrum disorder (ASD) in children and adults, and I have worked extensively within this field, in the NHS and privately.</p>

## Statement of Purpose

<b>Kerry Sharpe</b>	Child, adolescent and adult counsellor	diploma in psychotherapy and counselling, MA	<p>Qualified child, adolescent and adult counsellor and member of BACP. I have many years experience supporting housemates of various ages with social, emotional and behavioural difficulties including ASD, ADHD, OCD and attachment disorders. I have further experience supporting housemates who have experienced trauma, sexual abuse, neglect, low self-esteem, self-harm and suicidal thoughts.</p> <p>As well as talking I can incorporate sensory work, play, art and creativity to support self- expression and make sense of feelings and behaviours.</p>
<b>Stephen Aravena</b>	Counsellor/ Psychotherapist	-Post graduate diploma in psychotherapy and counselling -CYP IAPT	Over 20 years' experience working with children, young people, adults, couples and families. I am fully qualified and registered with BACP.
<b>Hannah Lynar</b>	Head of Wellbeing	Masters of Special Education PGCE Secondary QTS Post Graduate TESOL BA Arts in Religious Studies – theology	<p>Hannah migrated back to the UK from Australia and joined the White Trees team in January as the Head of Wellbeing and Education. Hannah's academic achievements and work experience have equipped her with the leadership skills, knowledge and drive for innovation that will enable her success within this role.</p> <p>Hannah is a qualified teacher with extensive experience and has completed Masters of Special Education. Most recently she held the position of Head of Learning Enhancement at a large independent school in Sydney. Her role gave her a unique oversight of teaching and learning practices at each stage and in every department across the school. She worked closely with her team including teachers, teachers aides and psychologists to ensure that the academic and social and emotional needs of all pupils was met through the personalization of their learning journey.</p> <p>Navigating the role of educator in today's world is complex. Hannah believes that it is in her honesty and ability to strive to continually learn and develop that she can be the best role model not only for her children but for all housemates in her care. Her hope would be that she is able to set an example to them that encourages them to be authentic, true to themselves and face the world with hearts full of love, compassion and courage.</p>

## Statement of Purpose

<b>Gozde Secer</b> (Maternity)	Assistant Psych	BSc, MSc clinical child psychology	Over 9 years' experience working and supporting housemates through roles in mentorship, Learning support and referrals and transitions officer.
<b>Caterina Fabris</b>	Therapeutic Intervention Lead	BSc, MSc in Research in Clinical Psychology	<p>My journey in mental health started in 2017 when I began my BSc in Psychology which was then followed by an MSc in Research in Clinical Psychology. While progressing with my studies I covered a variety of roles in the mental health setting including both paid and volunteer positions. I have experience working in hospitals, residential and community setting with different age groups (adults, older adults and children) and different conditions (e.g. psychosis, depression, EUPD).</p> <p>In the future I want to continue making a difference in the mental health setting and possibly qualify as Doctor in Clinical Psychology.</p>
<b>Haylee MacCallum</b>	Therapeutic Intervention Lead	BA Psychology, MSc Mental Health & Child Psychology	<p>Prior to moving to the UK, I completed my bachelor's degree in Honours Psychology in Nova Scotia, Canada. During my undergraduate degree, I was a research assistant in multiple psychology laboratories. Since moving to the UK, I have worked as a Early Years Practitioner at a Montessori nursery, a Learning Support Assistant at Autism Anglia's "Doucecroft School", and now as a Therapeutic Intervention Lead with White Trees company. I have also completed a master's degree in Mental Health and Clinical Psychology.</p> <p>In the future I would like to continue working in the mental health field and continue working with children and young people. Eventually, I would like to begin my doctorate in Educational Psychology.</p>

## **Statement of Purpose**

### *How we plan our care for each new young person:*

Following receipt of an initial referral from the child/young person's Social Worker,

Placements Team, the following procedure will apply:

- Local Authority Placement Teams Contact White Trees via the Placements Manager and an initial referral is shared in order to review. Following the review, as request may be will be sent in order to gather further information regarding the young person's needs, behaviours and associated risks
- Upon receipt of the additional information, the Registered Manager and Placements Manager will carry out a further review and begin SureCare's pre-admission assessments which includes professional consultations internally and externally with with all the professionals around the young persons case to ensure we have a full and comprehensive understanding of the young person's needs.
- Throughout this process, open and transparent discussions internally and externally are undertaken to consider how the home can potentially meet the young person's needs and transition them into the home in the most positive way possible without impacting the current residents within the home.
- Following this process, a decision will be made and an offer of placement sent to the local authority with appropriate funding and costings for the level of support needed
- Following the Local Authority agreement, arrangements are then made to visit the housemate to introduce ourselves and offer the opportunity to the housemate to ask any questions they may have about the home and the move to our home.
- During the visit, the homes management will provide the housemate with a Young Persons Handbook, pictures and any other relevant info about the home.
- Following this, further visits in person and/or virtually are offered as well as an overnight stay if it is felt that this would benefit a young person.
- The current residents and homes adults team and informed prior to the placement starting
- On the day of the move, the housemate will be supported by the Social Work Team at the home and a Placement Planning Meeting will be held.

Family contact will be arranged prior to placement beginning and confirmed upon the start of the placement. The home, within reason, will always support an achievable Contact Plan as long as it's safe and meaningful for the young person. Contact plans will always be reviewed on a regular basis to

## **Statement of Purpose**

ensure that contact for each housemate remains safe and meaningful and also reflects any positive or negative changes within the current contact plans.

SureCare does not consider Emergency Placements.

SureCare would consider short notice referrals but the the same referral process will be followed as a planned referral.

SureCare does not have an Out of Hours service and only considers referrals during regular office hours. The final decision for the placement of a child will be at the discretion of the Registered Manager. This will be based on completing the Pre-Admission documentation, undertaking consultations with professionals around the young person's case as well as considering if the young person's needs can be met without impacting the current residents within the home.

Following the admission of any housemate to the home, the Registered Manager is expected to complete a Reg 41 Placement Notification form that is emailed over to the designated person/department within the Host Local Authority to inform them that a Looked After Child has moved into the home. This process is also followed once a housemate moves from the home.

The written notification includes the following information:

- Child's Name and Date of Birth
- What order the Housemate is accommodated under
- Contact details of the placing authority, social worker and IRO
- Details of any statement of educational needs for the child and the LA that maintains the statement.
- Date of admission
- Date of Discharge
- New address details of where the housemate has moved to upon discharge

These are all required under revisions to Regulation 41 with immediate effect.