

Location Area Risk Assessment



PATHWAYS
August 2023

Pathways

Contents Page

Introduction (page 3)

Role of Provider (page 4)

Popular Attractions (page 5)

List of Local Health Services (page 6)

Key Contacts, Resources and Services (page 7)

Risk Assessment & Risk Management Strategies (pages 8-18)

Map of Local Area (page 19)

Crime Statistics - Saffron Walden, March 2017 (pages 20-24)

Introduction

All children, whether they are Looked After by the state or their parents, need to feel safe in the area surrounding their home. Just as any parent would want their child to live in a safe area, so too will a corporate parent who places children in a children's home. Recent public and media attention has focused on the physical environments of children's homes and the ever-changing risks associated with living in villages, towns and cities all round the UK. However, it is not always straightforward to define a 'safe' area. A place that was previously deemed safe can change rapidly and may cause a risk to vulnerable children in particular. Equally, in some individual cases, children may themselves heighten risks in an area if they have particularly risky behaviours and this is not managed appropriately.

A home may be located in an area with some local risks, and still be 'safe', if these are managed well, arrangements are made to keep children safe, and careful consideration is taken in particular around placement decisions. Risks associated with the location and the environment surrounding the home must always be considered along with the steps that should be taken to manage, limit, prevent and reduce to possibility of a young person be harmed whilst in a children's home and as mentioned previously, this puts additional emphasis on the placement decisions and in particular the providers matching process.

All Placing Authorities are equally as responsible for assessing local risks and making judgments about a location of a children's home before placing the child and in doing so should ensure that all relevant information about a young person has been shared with a provider to ensure that all risk factors have been considered and discussed. It is not only the risks that are considered when placing a young person in a certain location but also the accessibility for all young people to access external services such as education, health, CAMHS/Therapeutic services and age-appropriate activities

Our service Pathways is located in a very small and quiet village of Widdington, 6 miles from Saffron Walden, Essex. Widdington is a village and a civil parish near in the district of Uttlesford, in the county of Essex and the population of the parish at the 2011 census was 504. Widdington has a church called St Mary the Virgin, Widdington. Widdington is a small picturesque village situated two miles south east of Newport and around 6 miles south of Saffron Walden. Widdington is a delightful village with lots of history and character with the Village Green having late 18-century farm workers' cottages mixed with earlier stone and thatched cottages from the late 1600's.

Saffron Walden (Populations at 2009 census 14,469) itself is a delightful mediaeval market town located in north-west Essex and just 15 miles to the south of Cambridge. It has a rich heritage of old buildings, including the magnificent Jacobean mansion Audley End House and Gardens and St Mary's Church, the largest and one of the most beautiful parish churches in Essex.

Role of the Provider

Regulation 46 of the *Children's Homes Regulations 2015* introduced a requirement in January 2014 for providers or managers to:

- Ensure that premises used for the purposes of a children's home are appropriately and suitably located so that children cared for by the home are: effectively safeguarded, & able to access services to meet the needs identified in their care or placement plans;
- Review the appropriateness and suitability of the location of the premises at least once in every calendar year. Taking into account the requirement in regulation 12(2)©

Although it's difficult to predict the ever-changing local environment and the associated risks that come with change, the homes management have a responsibility to access all potential risks in the local area and implement strategies to limit, prevent and reduce the risk of a young person being harmed. The home's management will implement a Location Risk Assessment which will be kept under review and amended periodically depending on changes to the local environment and taking into account any new risks as these are identified.

As part of the home's responsibility, ensuring that young people have the opportunity to share their views about the home's location, to establish whether they feel safe and to offer feedback on the quality of care and support that they are offered by not only the home but local services too.

It is important for the homes management have a broad understanding of the area in which the home is located and the characteristics of the local environment.

When carrying out a Location Risk Assessment, the home management will need to take into account;

- Whether the location of the home potentially places an already vulnerable child in an area that could continue allowing that young person vulnerable to harm such as being targeted for CSE and/or radicalisation
- Whether the location will allow young people to continue exhibiting offending and anti-social behaviour;
- The suitability of the local neighbourhood as a location to care for children who may have already been victims of abuse and neglect; and
- Whether there are environmental factors that would represent a hazard to children, such as locations near busy roads.

Location assessments should also take into account any positive features in a local community that would offer benefits to children living in a children's home. For example, assessments could include evidence about opportunities for children to participate in leisure, sporting or cultural activities, or links with services that could support the child's ethnic or religious identity.

Popular attractions in the area include; Including youth clubs and local area clubs for YPs

Bassingbourn Snowsports Centre (SG8 5LL)

Place of Interest around 15 miles away.

Blake House Craft Centre (CM77 6RA)

Place of Interest around 11 miles away.

Docwra's Manor Gardens (SG8 6QS)

Place of Interest around 13 miles away.

Duxford

Place of interest around 10 miles away.

Hatfield Forest Country Park (CM22 6NH)

Place of Interest around 7 miles away.

Hatfield Forest National Nature Reserve (CM22 6NH)

Place of Interest around 8 miles away.

Hedingham Castle (CO9 3AH)

Place of Interest around 15 miles away.

Henry Moore Foundation (SG10 6DX)

Place of Interest around 11 miles away.

Imperial War Museum (Duxford) (CB22 4QR)

Place of Interest around 10 miles away.

Health Services located near Widdington and Pathways are:

Crocus Medical practice
Saffron Walden hospital site
Radwinter Road
CB113HY
TEL: 01799522327

Great Chesterford Surgery
Doctor
The Surgery, High Street, Great Chesterford
TEL: 01799 530228

Essex Sexual Health Service
Community Health Centre
Harlow
TEL: 0300 003 1212

Saffron Walden Community Hospital
Hospital
Saffron Walden
TEL: 01799 562900

North Essex Partnership NHS Foundation Trust
Mental Health Services
Chelmsford
TEL: 01245 54600
Open until 16:30

Key contacts, resources and services

The Children's home already has links within the local authority in order to consult about any local issues or individual issues with young people. The key links for local services are detailed below and their responses to consultation on the location report.

Local Service	Key Individual and contact details	Feedback for assessment
LADO	Essex Safeguarding Team – Essex County Council Essex Duty LADO number: 03330 139 797	LADO have been contacted and invited to the home to meet with the homes management to discuss the service and discuss how we as a home are going to work successfully with the local Safeguarding Teams to protect our young people
Offending & Missing Person's	Amber Kirby 80693 Missing Person's Liaison Officer North Hub – Braintree Police Station 01245 491491 EX488988 Mobile 07980754854 amber.kirby@essex.police.uk	The local MPLO and Anti-Social behaviour officer have already visited Pathways and met with the management to discussed the homes service and how we are all going to work in collaboration to ensure the safety of our young people

Local Probation / YOT Services	<p>Mid Essex Youth Offending Team Team Manager: Kate Hill Suite 2, Empire House Victoria Road, Chelmsford Essex. CM1 1PA Telephone: 03330 138932 Fax: 01245 358337 Email: yot.chelmsford.ecc@essex.gov.uk</p>	<p>Any young person that comes to the home that already has involvement with YOS and/or commits an offence whilst at Pathways will be supported by the local YOS. The homes staff will work closely with the local YOS to ensure that any young person that must attend regular appointments and needs support in fulfilling any court order that's in place</p>
EWMHS	<p>www.nelft.nhs.uk/services-ewmhs Tel: 0300 300 1600</p>	<p>Referrals for local Mental Health services can be made via the website and telephone number provided and once a referral has been made, an officer will be allocated to consult with the relevant professionals and potentially support any young person that requires needs it</p>
Local Health Services	<p>Emma Good (Specialist Nurse for LAC) Mobile 07966160978 01279 342166</p> <p>Caroline Bowles (Leaving Care Nurse) 07831 644383</p>	<p>The homes manager has contacted the local LAC nurses, introduced herself and began building a working partnership that will support the homes young people. The LAC nurse will regularly visit the home and our young people. They are informed when a new placement is accepted or a young person leaves.</p>
Residents		<p>All young people who are accommodated at Pathways are offered the opportunity to contribute and share their views about the homes Location Risk Assessment.</p>
Essex Police Children & Young persons liaisons officer for Uttlesford	<p>Glenn Braden PC 42075767</p> <p>Glenn.braden@essex.police.uk</p> <p>John Starr jstarr@uttlesford.gov.uk</p>	<p>Glenn will make regular welfare calls to Pathways and ensure the Young People feel supported within the local community and provide support to staff.</p> <p>John is the community safety partnership in Uttlesford's district council and provides Education about inherent risk and factual matters regarding personal safety and alcohol and drug consumption</p>

Potential Hotspots

Below are areas (potential hotspots) where our young people may go to if they leave Pathways or staff whilst out in the community. These are a couple of potential areas where they may be placed at risk and have historically been associated with.

Skate Park

The common

Other potential hotspots near Pathways include potential public transport links that may encourage young people to get to the destinations highlights below. Such as in Widdington is Newport Train Station which is situated approx. 1.2 miles away from Pathways. Young people may use this as their means of transport if they leave Pathways on foot.

Risk Assessment & Risk Management Strategies

Contents;

- **Road**
- **M11**
- **Local Transport Links**
- **Access to local villages and towns**
- **Railway Lines**
- **Bridge**
- **River**

Risk Assessment - *Potential risk factors due to the location of the home and the environment surrounding the home;*

Road;

The road directly in front of the home is a potential risk due to being a small country lane with no footpath and no street lightening. At present, the road also has a speed limit of 60mph.

Although the road is not a busy, it is 1 of only 2 roads that is used by local residents to access the village of Widdington (2011 census 504 residents) and local farms. A map of the local area (see page 19) would clearly show that the home is not located on a "through road" to gain easier and quicker access to other nearby villages and larger towns as the B1383 (1 mile away) is the main road that used to access all nearby villages and towns

Whilst the road outside the home is not busy, the risk of harm would still remain high if any young person were to attempt to access the road, especially if their behaviour erratic and such that they were not using the road with safety in mind.

If any young person that were to access the road during the daylight hours, they would find that there were no footpaths on either side of the road, some uneven ground in parts and a road that has a steady stream of traffic that could potentially be driving at speeds up to 60mph

At night, all the above would apply but there would be an added risk of the young person not being able to see where they are going due to not having any street lights to help guide them along the road and assist them with their footing on parts of the road that maybe uneven

The home will potentially accommodate young people with a history of missing behaviour and emotional instability and on occasions this may cause them to possibility attempt to leave the premises on foot and access the road in order to abscond or have time and space away from the home. Any young people who are initially accommodated at Pathways are very likely to be unfamiliar with the local area and the risks associated with the local road (no footpaths, no street lighting) and this would also increase the risk of harm caused by the location of the road.

Probability of risk occurring			Severity of possible injury/harm			Total Risk
High=3	Moderate=2	Low=1	High=3	Moderate=2	Low=1	
3			3			6

Risk Levels PIOR to Preventative Measures in place: ROAD

Risk Management – *Strategies, actions and protective factors that the home will undertake to manage, limit and prevent the risk of harm to its young people;*

Upon arrival to the home, each young person will have a Placement Planning Meeting (PPM) which will provide the homes management to provide valuable information about the road, local area and the risk of harm. Following this, staff will complete a Residents Induction Programme with each young person and will provide important and relevant information about the home which will include warnings about the potential of risks associated with the local roads if they were to be accessed and if they were to be used without due care and attention.

As part of the Induction Programme, each young person will be provided further literature and information in order to educate them on general road safety awareness and will also be given clear information about what responses to expect from staff if they were to access the road and place themselves in danger. Staff will also remind young people that staff will have regular use of the homes

vehicles so that young people can access the local community as per their individual risk assessment and in line with their care plans. In the event that a young person is accommodated in the home late at night or in the early hours of the morning, this same admission and matching procedure will have been followed by homes management. If the young person is refusing to engage in the induction due to the time and circumstances of the admission, then staff will undertake the same procedure at the earliest opportunity and if the young person were to leave the home during this period, then the homes staff will follow the homes Missing Policy, Location Area Risk Assessment (LARA) and Missing Protocol. At the very least, staff will verbally warn each young person through the Placement Planning Meeting of the dangers of the local area which will include the road, and record that the young person has acknowledged this through the signing of the appropriate section of their induction programme.

Prior to accommodating any young person at Pathways, the Location Area Risk Assessment will be sent to the placing authority for review on all the potential risks with a particular emphasis taken to discussions around the risks of the local roads and the strategies that staff will use to manage this risk. As part of the homes robust matching process, the homes management will consult with the placing authority to assess the possibility of a young person accessing the road to abscond and/or place themselves at risk by using the road in a way that would be deemed risky. The homes management will request any information about any historic concerns/incidents that would suggest that a young person would potentially place themselves at risk using the road and if there was any evidence that the young person had a good awareness of road safety. All the information gathered will contribute to any decisions around the refusal or acceptance of a referral.

If a young person were to leave the home without support and guidance from staff and attempt to access the road then staff will attempt to redirect the young person into the garden where it is safer and remind the young person of the risks associated with accessing the road. The home has a 6ft high fence and hedge around its perimeter to assist staff monitoring the young people and keeping them safe. The homes entrance gate on the drive will also remain closed at all time when not in use so will hopefully act as a deterrent or at least slow a young person down if they were to attempt to access the road. All staff will have the responsibility of ensuring that the gate remains closed at all times when not in use and the homes management will ensure that all new staff will read the homes Local Risk Assessment and acknowledge that they are aware of all the risks and responsibilities associated with the road through the homes staff induction process.

Accessing the road at any time during the day can be risky, there are some differing risks that need to be considered during daylight and night-time hours. Although there will be obviously more passing traffic during the daylight hours, the fact young people and staff (when following) will be able to see clearly where they are going and that drivers will have a quicker response time to slow down and avoid any young person and staff in the road will certainly help to reduce the potential of any serious incident. With the home not securing its doors during the day, the likelihood of a young person having the opportunity to access the road will be higher than at night but this will also be during the hours where the staffing levels are higher meaning that there are more staff to work with, support and protect a young person from potentially placing themselves at risk. In the event of a young person attempting to go missing and/or access the road at night, staff will need to be prepared and mindful of the additional risks that are associated with accessing the road at night. Staff are provided with a high vis vest as there is no street lighting or footpaths. It will be difficult for young people to see where they are going which in itself could cause an injury by tripping or falling.

Although passing traffic may not have as much time to avoid any young person in the road, the fact that the road naturally has less traffic, is quieter and unlit will assist the young person and the staff member following to hear oncoming traffic and also see the cars headlights which will offer an opportunity for both the young person and staff to avoid the oncoming car and move to safer location. Staff following

any young person will also be equipped with a torch and florescent clothing and will use this to draw attention to themselves and any young person to reduce the risk of harm.

We believe that due to the home being secured at night by staff, young people being aware that there are no "off peak" bus or train services locally, no busy town that has shops open late and no street lighting, that this will be a deterrent in itself and if managed correctly, will reduce the risk of young people placing themselves using the road inappropriately at night. Each young person will have a Missing Protocol that staff will follow each time a young person is believed to be potentially engaging in risk taking and/or missing behaviour and will have instructions on how to manage the risk, work with their colleagues and any external services and aim to have the young person returned home safely at the earliest opportunity.

The home has currently been working with Widdington Parish Council and Uttlesford Planning/Highways Department to request a review of the local speed limit and are requesting to move it in line with the 30mph speed limit that has recently been implemented in the centre of Widdington. In light of the home having these concerns, additional road signs close to the home warning of potential risks of people crossing and requesting that drivers reduce their speed have been installed as well as suitable lighting to aluminate the driveway which aims to allow safer use and to draw attention to passing traffic that there is a residential driveway in regular use.

Any and every-time a young person attempts to access the road to engage in risk taking behaviour whether that be to go missing, cause disruption, self-harm or even exhibit extreme attention seeking behaviour, staff will follow on foot and/or in a company vehicle in order to minimise the risk and encourage the young person to return safely to the home. Staff that follow young people on foot will have access to a "Grab Bag" that will contain essential items and equipment that maybe needed to support staff in trying to minimise the risk of the young person coming to any harm. The items in the "Grab-Bag" include;

- A mobile phone, a walkie talkie, a torch, map of the local area, some money, a first aid kit, florescent, waterproof and warm clothing that will allow the young person and staff to remain visible, dry and warm as well as some drinking water and some light snacks. In addition to this, staff will also wear waist-packs that will also have additional items in such as money, torch and a list of important information and numbers for them to use in during an incident

If any young person were to access a bus or train whilst staff are following them then with their waist pack and grab bag they would be fully prepared to follow a young person onto the bus or train in order to monitor the young person in attempt to keep them safe

If in extreme circumstances a young person is placing themselves and/or staff at risk then staff may have no option but to restrain them as a safety measure and/or contact the emergency services for Support

Risk Levels POST to Preventative Measures in place: ROAD

Probability of risk occurring			Severity of possible injury/harm			Total Risk
High=3	Moderate=2	Low=1	High=3	Moderate=2	Low=1	
	2			2		4

Risk Assessment - Potential risk factors due to the location of the home and the environment surrounding the home;

M11;

The M11 Motorway is situated 1.3 miles away from the home.

With a highspeed motorway running close to the home, there are obvious high risks and concerns about the potential of harm if a young person was to access the M11 carriageway.

Probability of risk occurring			Severity of possible injury/harm			Total Risk
High=3	Moderate=2	Low=1	High=3	Moderate=2	Low=1	
	2		3			5

Risk Levels PRIOR to Preventative Measures in place: M11

Risk Management – Strategies, actions and protective factors that the home will undertake to manage, limit and prevent the risk of harm to its young people;

Although there are obvious risks of harm that must be considered with the M11 being responsibly close to the home, the access to the carriageway is restricted by fencing, barriers and hedges that surround roads, farmland and countryside surrounding the M11. With the by closest junctions accessing the M11 being at Junction 8 for Birchanger Green (9 miles away) and at Junction 9 for Saffron Walden (8 miles away), this also reduces the risk significantly as there is no easy access to the carriageways.

Probability of risk occurring			Severity of possible injury/harm			Total Risk
High=3	Moderate=2	Low=1	High=3	Moderate=2	Low=1	
		1		2		3

Risk Levels POST to Preventative Measures in place: M11

Risk Assessment - Potential risk factors due to the location of the home and the environment surrounding the home;

Local Transport Links;

There is a local village bus service that travels past the home and travels between Bishop Stortford and Saffron Walden which are larger towns with larger populations and additional transport links that have additional transport links. This is a service that serves the local villages during a "peak hours only" and are obviously less frequent on weekends and public holidays

Newport Train Station is the closest railway line which is 1.2 miles away from Pathways and access' London Liverpool Street and Cambridge. With Newport being a small village, the station is often "unmanned" with a reduced timetable during off peak hours, weekends and public holidays

Probability of risk occurring			Severity of possible injury/harm			Total Risk
High=3	Moderate=2	Low=1	High=3	Moderate=2	Low=1	
	2			2		4

Risk Levels PRIOR to Preventative Measures in place: Local Transport Links

Risk Management – *Strategies, actions and protective factors that the home will undertake to manage, limit and prevent the risk of harm to its young people;*

With the rural location of Pathways and the restrictive transport links to and from the home, the home will be able to, through its matching process, offer an environment that can potentially restrict, prevent, reduce and discourage young people from exhibiting missing behaviour.

Initiating SureCare's matching process and formulating an initial risk assessment in collaboration with the placing authority, family (if appropriate) and any other relevant professionals, will assist the homes manager in making an informed decision as to whether the homes location and lack of transport links will be a significant enough deterrent and safeguarding measure to reduce a young person's missing behaviour. The homes staff will be fully aware of the local bus and train routes and the homes risk assessment and missing protocols will reflect the actions that staff will take if a young person were to attempt to access local transport. As mentioned previously, staff have company vehicles that will allow staff to follow any buses and attend any local train stations in attempt to prevent and reduce the chances of any harm coming to a young person.

The home has already established a good working relationship with the local Missing Person's Liaison Officer and Anti-Social Behaviour Officer through Essex Police and will work closely in partnership with them to reduce the risk of any harm coming to our young people

Risk Levels POST to Preventative Measures in place: Local Transport Links

Probability of risk occurring			Severity of possible injury/harm			Total Risk
High=3	Moderate=2	Low=1	High=3	Moderate=2	Low=1	
		1			1	2

Risk Assessment - *Potential risk factors due to the location of the home and the environment surrounding the home;*

Access to Towns & Villages;

The home is situated on the outskirts of a very small village of Widdington and within 1.5 miles from a slightly bigger village of Newport.

The home is situated 5.8 miles from Saffron Walden Town Centre and 8.7 miles from Bishop Stortford with both towns having larger populations, more shops with later opening hours and transport links that will be accessible late into the night.

The closest shops in the village of Newport which there is a small supermarket, a village newsagent, a post office, a café and a barber, all of which are not open late into the night.

Naturally, the home will have to consider that when conducting the matching process, that any concerns about a young person spending time in the local villages and larger towns mentioned could be a risk. The risk of harm and exposure to negative influences will need to be considered prior to the commencement of the placement along with how the more time is spent in these areas may cause a young person to be exposed to crime and anti-social behaviour as well as potentially be groomed and/or subject to CSE.

Probability of risk occurring			Severity of possible injury/harm			Total Risk
High=3	Moderate=2	Low=1	High=3	Moderate=2	Low=1	
	2			2		4

Risk Levels PRIOR to Preventative Measures in place: Access to Towns and Villages

Risk Management – *Strategies, actions and protective factors that the home will undertake to manage, limit and prevent the risk of harm to its young people;*

Whilst maintaining a balance of encouraging social skills and educating young people on potential risks, the home will prior to any placement commencing have an initial RAMP in place that outlines the potential risks and vulnerabilities of each young person.

Due to the nature and location of the service, it is very likely that any young people that are accommodated at Pathways will be initially on 1:1 supervision out in the community until such time that all the homes management, placing authority and family (where appropriate) are satisfied that a young person is able to be trusted to manage their behaviour out in the community on their own and not place themselves at risk of harm.

All arrangements for young people having “free time” away from the home will be discussed and agreed with all the professionals involved, with the family (where appropriate) and with the young person to ensure that the young person feels that they have contributed to the decision making, that they are

aware of the expectations placed upon them and understand the reasons for certain decisions being made.

Once any arrangements are in place it will be the homes duty to frequently monitor the arrangements around a young person’s unsupervised time and ensure that this “free time” is being used suitably and in a way, that ensures that the young person remains safe from harm.

There are numerous non-invasive and intrusive monitoring strategies that the homes staff can use to monitor a young person’s behaviour, safety and “free time” such as;

- Regular communication with a young person before, during and after any “free time” to monitor their movements
- Work closely with the young person’s family, friends and any relevant people at clubs, schools and schemes to gather important information about how the young person is whilst away from the home
- Staff noticing a change in patterns of behaviour; for example, a young person begins returning home and not presenting as they usually do, that a young person has some new belongings that cannot be explained and sensitively exploring why a 10-minute train journey has taken 2 hours

Staff will record and report in a timely manner any concerning patterns of behaviour, sudden changes to how a young person is presenting as well as any concerns around CSE, gangs and/or radicalisation. The homes staff will work with all professionals and external services in order to protect a young person from harm and frequently consult with the relevant services to monitor any ongoing risks

The home recently requested and received a disclosure from Essex Police as part of the regulations around our Location Risk Assessment. Essex Police kindly provided relevant information about any concerns in the local area and directed us to the local crime statistics posted on line by Essex police as of March 2017 which have been attached to the back of this document.

Essex Police were also supportive in confirming that there had been no crime reported in the village of Widdington for the past 10 years and that that Newport has had 4 reported crimes in the past 2 years. Essex police were able to also confirm that there are no known current concerns around CSE, gangs and radicalisation although there had been a small increase in drug activity in Saffron Walden’s town centre. Overall, Essex Police stated that crime of any sort in Saffron Walden is low for its population and that the location that Pathways is situated in would appear safe and in a low-risk area.

Risk Levels POST to Preventative Measures in place: Access to Towns & Villages

Probability of risk occurring			Severity of possible injury/harm			Total Risk
High=3	Moderate=2	Low=1	High=3	Moderate=2	Low=1	
		1			1	2

Risk Assessment - *Potential risk factors due to the location of the home and the environment surrounding the home;*

Railway Lines;

There is a railway line 0.7 miles away from the home.

This railway line cannot be accessed easily on foot and is not in the direct vicinity of the home and has high fencing and locked gates surrounding it restricting any access to unauthorised persons.

If a young person was determined enough to access the railway lines, they potential do so through the local railway station 1.3 miles away

Risk Levels PRIOR to Preventative Measures in place: Railway Lines

Probability of risk occurring			Severity of possible injury/harm			Total Risk
High=3	Moderate=2	Low=1	High=3	Moderate=2	Low=1	
	2		3			5

Risk Management – *Strategies, actions and protective factors that the home will undertake to manage, limit and prevent the risk of harm to its young people;*

Although the railways lines are some distance from the home and not easily accessed, this is a risk that must be considered and reviewed during the matching process and throughout a young person’s placement at Pathways. With no suitable road for staff and young people to walk on locally, the railways lines are not something that a young person will immediately be drawn to or can access easily, but as mentioned previously if a young person was to attempt to access the local village of Newport (1.2 miles away) on foot, then they may be drawn to the whereabouts of the railways lines. Staff will support any young person that leaves the home by safely following on foot and/or the homes vehicle to attempt to return the young person to the home in a safely without any significant incidents occurring. Staff that following young people on foot will have access to a ‘Grab Bag’ that will contain essential items and equipment that maybe needed to support staff in trying to minimise the risk of the young person coming to any harm. The items in the ‘Grab-Bag’ include;

- A mobile phone, a walkie talkie, a torch, map of the local area, some money, a first aid kit, florescent, waterproof and warm clothing that will allow the young person and staff to remain visible, dry and warm as well as some water and some light snacks. In addition to this, staff will also wear waist-packs that will also have additional items such as money, torch and a list of important information and numbers for them to use during an incident.

If in extreme circumstances a young person is placing themselves and/or staff at risk then staff may have no option but to restrain a young person as a safety measure and/or contact the emergency services for assistance.

Risk Levels POST to Preventative Measures in place: Railways Lines

Probability of risk occurring			Severity of possible injury/harm			Total Risk
High=3	Moderate=2	Low=1	High=3	Moderate=2	Low=1	

	2			2		4
--	---	--	--	---	--	---

Risk Assessment - *Potential risk factors due to the location of the home and the environment surrounding the home;*

Bridge;

There is a bridge that crosses the local railway lines within a mile of the home. There is an obvious risk of harm as the bridge has an approximate 30 foot drop down onto the train line but with a purpose-built high wall surrounding the bridge and security fencing and gates surrounding the bridge, this acts as a deterrent to anyone that potentially want to access the train lines or harm themselves by attempting to jump off of the bridge.

Risk Levels PRIOR to Preventative Measures in place: Bridge

Probability of risk occurring			Severity of possible injury/harm			Total Risk
High=3	Moderate=2	Low=1	High=3	Moderate=2	Low=1	
	2		3			5

Risk Management – *Strategies, actions and protective factors that the home will undertake to manage, limit and prevent the risk of harm to its young people;*

Bridge;

Although the bridge is some distance from the home and not easily accessed, this is a risk that must be considered and reviewed during the matching process and throughout a young person's placement at Pathways. Like the railways line, with no suitable roads for staff and young people to walk on locally, the bridge is not something that a young person will immediately be drawn to or can access easily, but as mentioned previously, if a young person was to attempt to access the local village of Newport (1.2 miles away) on foot, then they may be drawn to the whereabouts of the bridge.

Staff will support any young people that leaves the home by safely following on foot and/or the homes vehicle to attempt to return the young person to the home in a safely without any significant incidents occurring. Staff that following young people on foot will have access to a 'Grab Bag' that will contain essential items and equipment that maybe needed to support staff in trying to minimise the risk fo the young person coming any harm. The items in the 'Grab-Bag' include;

- A mobile phone, a walkie talkie, a torch, map of the local area, some money, a first aid kit, florescent, waterproof and warm clothing that will allow the young person and staff to remain visible, dry and warm as well as some water and some light snacks. In addition to this, staff

will also wear waist-packs that will also have additional items in such as money, torch and a list of important information and numbers for them to use in during an incident.

If in extreme circumstances, a young person is placing themselves and/or staff at risk then staff may have no option but to restrain a young person as a safety measure and/or contact the emergency services for assistance.

Risk Levels POST to Preventative Measures in place: Bridge

Probability of risk occurring			Severity of possible injury/harm			Total Risk
High=3	Moderate=2	Low=1	High=3	Moderate=2	Low=1	
		1		2		3

Risk Assessment - *Potential risk factors due to the location of the home and the environment surrounding the home;*

River Cam;

The River Cam runs through parts of Widdington and into nearby villages. The River Cam is a well-known local tourist attraction with parts of the River being accessible in the nearby villages of Quendon and Newport through Nature Walks/Trails through the beautiful countryside of Essex.

The river is approximately 2 meters in width and approximately 1 meter in depth and is not suitable for boats, barges or for the public to use to access or swim in

Probability of risk occurring			Severity of possible injury/harm			Total Risk
High=3	Moderate=2	Low=1	High=3	Moderate=2	Low=1	
	2			2		4

Risk Levels PRIOR to Preventative Measures in place: River Cam

Risk Management – *Strategies, actions and protective factors that the home will undertake to manage, limit and prevent the risk of harm to its young people;*

With much of the river not being accessible in Widdington itself due to the river running through farmland and running alongside the railways lines that are all surrounded by fencing, the risk of a young person accessing the river would be low.

Risk Levels POST to Preventative Measures in place: River Cam

Probability of risk occurring			Severity of possible injury/harm			Total Risk
High=3	Moderate=2	Low=1	High=3	Moderate=2	Low=1	
		1			1	2

Risk Assessment - *Potential risk factors due to the location of the home and the environment surrounding the home;*

Maintenance Shed;

Pathways has an acre of land and situated at the back of the garden is a maintenance shed which stores equipment for Surecare’s Maintenance team to access when onsite to undertake maintenance work.

Potential risk held with this is the possibility that young people gain access to the shed and may gain access to potential objects that can be used as weapons or items that could be used to potentially self-harm.

The back of the Maintenance shed also has a hidden spot away from the home where young people may go to potentially to smoke cigarettes which adds to the risk of fire hazard. There is also the potential Risk of young people who may of try to form relationships being behind the shed hiding from staff. Therefore, increasing the risk of allegation/assaults.

Risk Levels PRIOR to Preventative Measures in place: Maintenance Shed

Probability of risk occurring			Severity of possible injury/harm			Total Risk
High=3	Moderate=2	Low=1	High=3	Moderate=2	Low=1	
	2			2		4

Risk Management – *Strategies, actions and protective factors that the home will undertake to manage, limit and prevent the risk of harm to its young people;*

With the Maintenance Shed being on the premises of Pathways, the shed will be always locked, only accessible to Surecare’s Maintenance team. This area will be checked consistently to ensure the shed is locked and the surrounding area is safe from rubble, rubbish etc.

Staff will also be mindful of our young people’s whereabouts when around the home and our young people will be observed/followed to the back of the garden if they go towards the Maintenance Shed.

Risk Levels POST to Preventative Measures in place: Maintenance Shed

Probability of risk occurring			Severity of possible injury/harm			Total Risk
High=3	Moderate=2	Low=1	High=3	Moderate=2	Low=1	
	2			2		4

Risk Assessment - *Potential risk factors due to the location of the home and the environment surrounding the home;*

Managers Office;

On the premises of Pathways, there is a Manager’s Office across from the home separate to Pathways. The Managers Office is in front of parked cars which may mean young people may be outside to access the Office when cars drive in.

Managers office may store documents regarding the young people which are confidential. If accessible to young people, there is a risk of data breach.

Risk Levels PRIOR to Preventative Measures in place: Managers Office

Probability of risk occurring			Severity of possible injury/harm			Total Risk
High=3	Moderate=2	Low=1	High=3	Moderate=2	Low=1	
		1			1	2

Risk Management – *Strategies, actions and protective factors that the home will undertake to manage, limit and prevent the risk of harm to its young people;*

Manager’s office is only accessible to the Homes Manager and Deputy Manager, who are the only ones who have keys to the office. The only time the Manager’s Office will be accessible is when the Homes Manager or the Deputy Manager is onsite in the Managers office.

To reduce the risk of data breach as confidential documents are stored in the office, any time the Homes Manager or Deputy Manager exit the Managers office, it will be locked to ensure no other entry is possible. The office will also remain locked when the Homes Manager or Deputy Manager are offsite.

Risk Levels POST to Preventative Measures in place: Managers Office

Probability of risk occurring			Severity of possible injury/harm			Total Risk
High=3	Moderate=2	Low=1	High=3	Moderate=2	Low=1	
		1			1	2

Risk Assessment - *Potential risk factors due to the location of the home and the environment surrounding the home;*

Games Room;

Pathways Games room is situated separately to the home. It is hidden behind the garages on site, requiring young people to exit the home to reach the Games room.

On the outer section of the Games rooms is located Pathways oil tank which contains litres of oil that may potentially be a fire hazard.

Risk Levels PRIOR to Preventative Measures in place: Games Room

Probability of risk occurring			Severity of possible injury/harm			Total Risk
High=3	Moderate=2	Low=1	High=3	Moderate=2	Low=1	
		1			1	2

Risk Management – *Strategies, actions and protective factors that the home will undertake to manage, limit and prevent the risk of harm to its young people;*

Due to the Games room being separate to the home, staff will support the young people during the use of the Games Room. 1 staff member will be in the Games Room with the young people, carrying a grab bag which consists of: money, torch and a list of important information and numbers for them to use if necessary. Staff will also carry a walkie talkie to remain in communication with other staff members within the home – to be used for regular updates and if staff require further assistance.

When the Games room is not in use, this will be locked. The latest time young people will be allowed in the Games Rooms is until 9pm then will have to come back to the home for the remainder of the evening.

Within the Games room consists of two fire extinguishers to be used in an event of a fire. As previously stated, 1 staff member will be available to carry out a fire drill procedure if necessary.

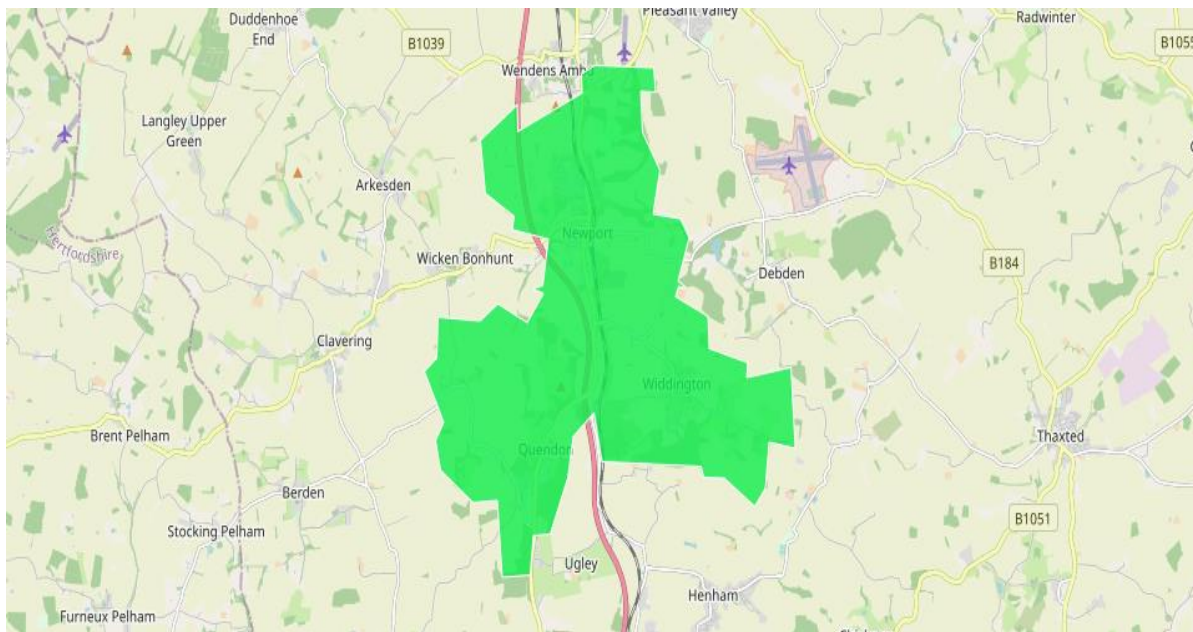
The location of the oil tank is locked and inaccessible to the young people.

Risk Levels POST to Preventative Measures in place: games room

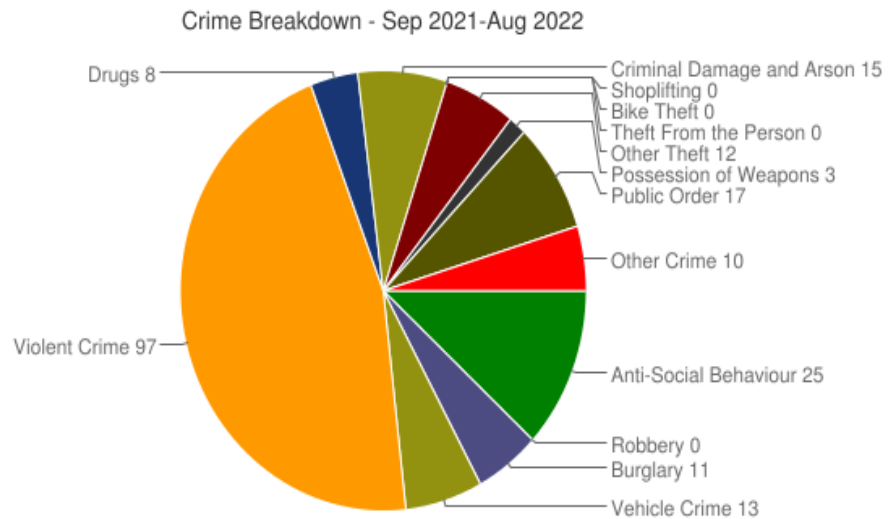
Probability of risk occurring			Severity of possible injury/harm			Total Risk
High=3	Moderate=2	Low=1	High=3	Moderate=2	Low=1	
		1			1	2

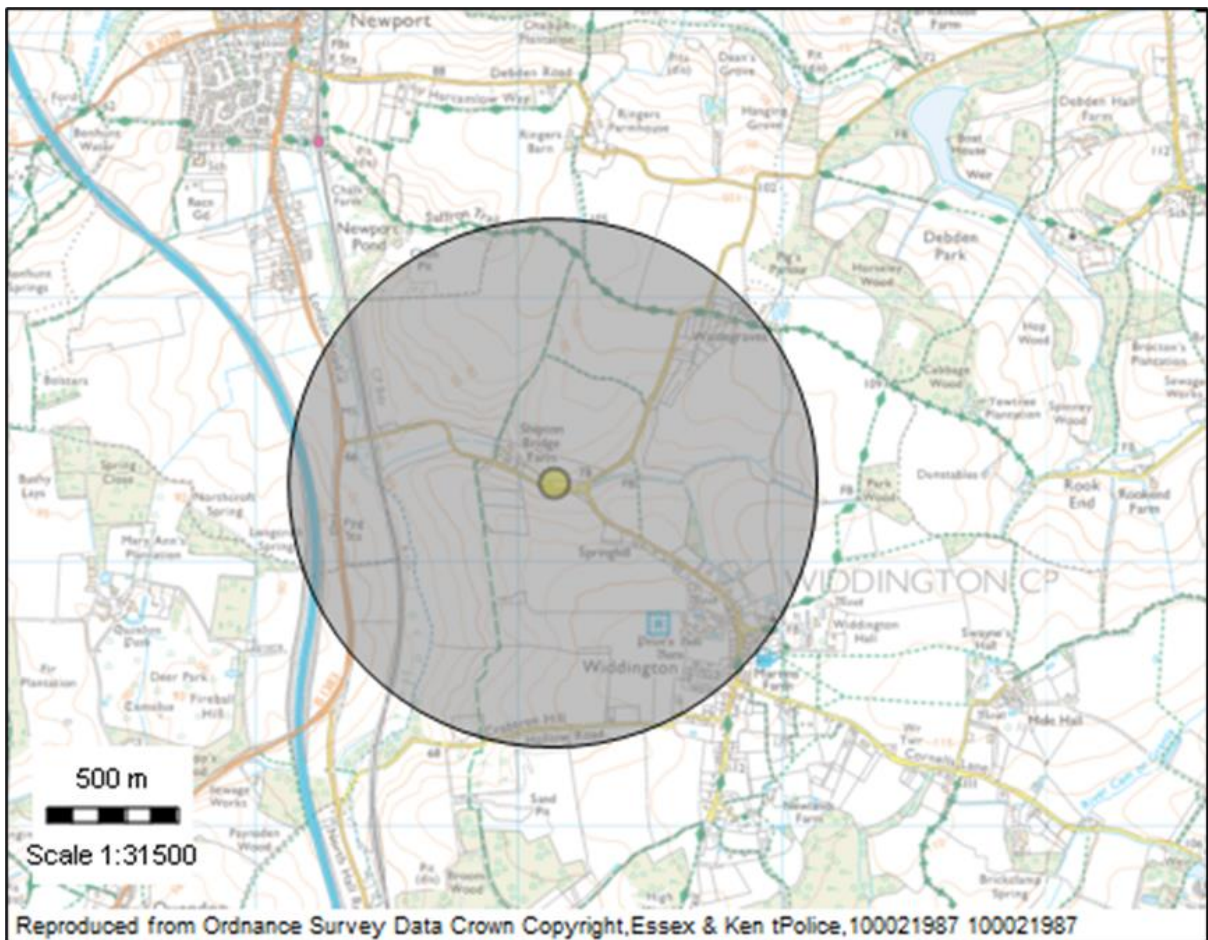
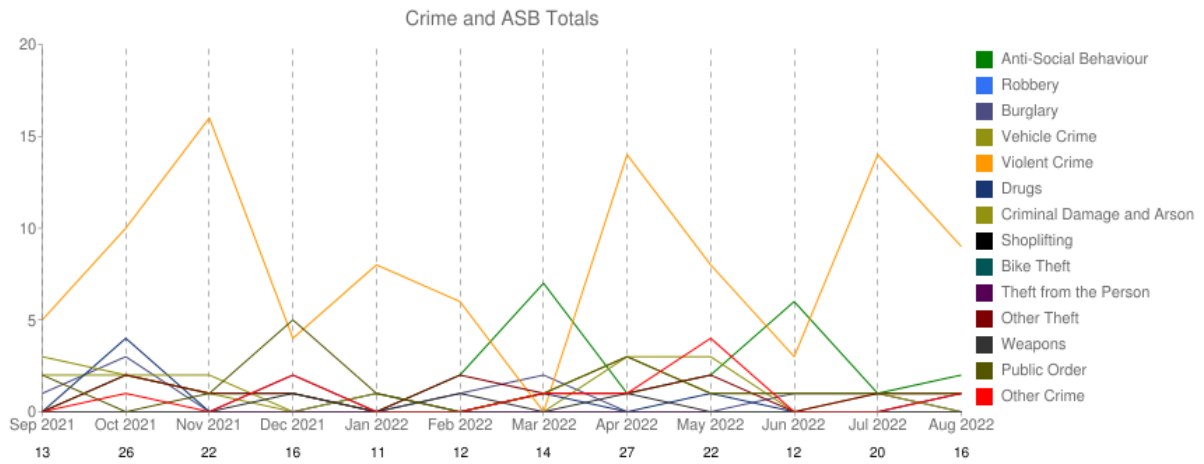
--	--	--	--	--	--	--

Crime Plus ASB Breakdown for Saffron Walden Central



©Copyright UKCrimeStats.com





Nine crime investigations between 21/08/2022 – 21/02/2023 within a 1km radius of this address. Of these, six were assaults (with or without injury), two were instances of criminal damage and one was a sexual offence.

The 1km radius around the address **does not contain any identified knife crime hotspots** (correct as of 21/02/2023). These hotspots are reviewed on a regular basis, so any identified hotspots are not necessarily permanent ones.

Intelligence:

The area surrounding the address of the care home is subject to very little current intelligence. A small amount of intelligence exists around drug consumption and supply in the area. A handful of intelligence reports relate to various driving offences, i.e., reports of people driving whilst disqualified or under the influence of drugs/alcohol. No recent intelligence specifically relating to or mentioning Shiptons Cottage.

Gangs and county lines:

There is currently no intelligence to suggest any active gang nominals, county lines or OCG nominals are living or operating within proximity to this care home.

RSO proximity:

There are currently no RSOs recorded as living within a 1km radius of this address.