

Location Area Risk Assessment



BENTLEYS

August 2021.

New Home.

Contents Page

Introduction

Role of Provider

Popular Attractions

List of Local Health Services

Key Contacts, Resources and Services

Risk Assessment & Risk Management Strategies

Map of Local Area

Crime Statistics: Dec 2019 – Nov 2020 and March 2021

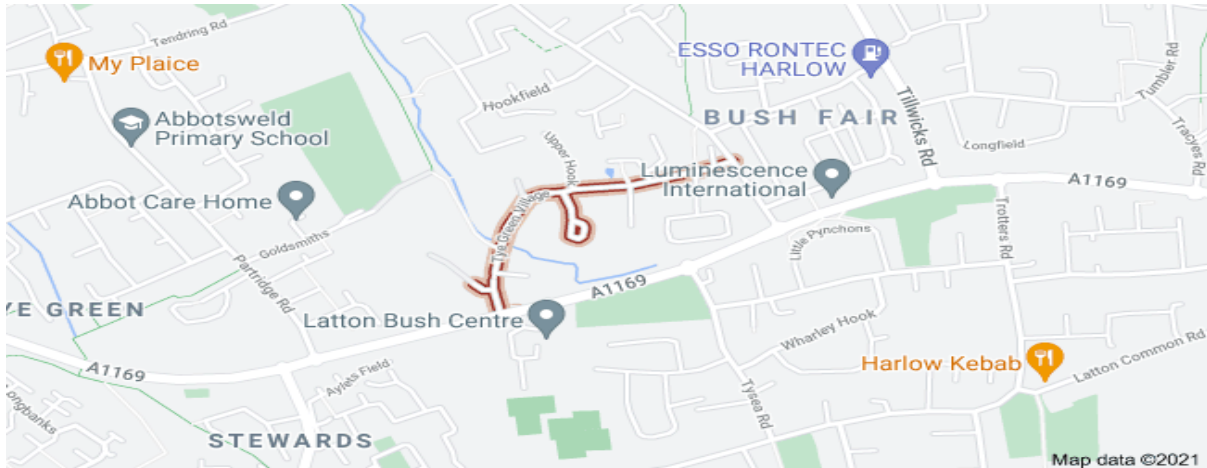
Introduction

All children, whether they are Looked After by the state or their parents, need to feel safe in the area surrounding their home. Just as any parent would want to their child to live in a safe area so too will a corporate parent who places children in a children's home. Recent public and media attention has focused on the physical environments of children's homes and the ever-changing risks associated with living in villages, towns and cities all round the UK. However, it is not always straightforward to define a 'safe' area. A place that was previously deemed safe can change rapidly and may cause a risk to vulnerable children in particular. Equally, in some individual cases, children may themselves heighten risks in an area if they have particularly risky behaviours and this is not managed appropriately.

A home may be located in an area with some local risks, and still be 'safe', if these are managed well, arrangements are made to keep children safe, and careful consideration is taken in particular around placement decisions. Risks associated with the location and the environment surrounding the home must always be considered along with the steps that should be taken to manage, limit, prevent and reduce to possibility of a young person be harmed whilst in a children's home and as mentioned previously, this puts additional emphasis on the placement decisions and in particular the providers matching process.

All Placing Authorities are equally as responsible for assessing local risks and making judgments about a location of a children's home before placing the child and in doing so should ensure that all relevant information about a young person has been shared with a provider to ensure that all risk factors have been considered and discussed. It is not only the

risks that are considered when placing a young person in a certain location but also the accessibility for all young people to access external services such as education, health, EWMHS/Therapeutic services and age-appropriate activities



BENTLEY'S is located in Tye Green Village which is an area location in the Essex town of Harlow, outside of the main town centre. The home is located in a quieter area of Harlow, and it is more of an affluent area compared to some other areas in Harlow. Harlow is a former New Town in Essex. It is located in the upper Stort Valley, it was built in the decades after the Second World War to ease overcrowding in London and provide homes for people bombed out during the Blitz. It includes Britain's first pedestrian precinct and first modern residential tower block, The Lawn. Old Harlow, the historic part of the town, was mentioned in the Domesday Book.

There are local transport links available for Harlow, which is positive for promoting independence in the young people.

Tye Green Village is located within the county of Essex which is in the East of England region of the UK. 19.98 miles North East from the centre of London, 15.78 miles West from the centre of Chelmsford, 19.15 miles East from the centre of St Albans and 23.89 miles East from the centre of Luton.

About the demographic Information

The information on housing, people, culture, employment and education that is displayed about Tye Green Village, Harlow, CM18 is based on the last census performed in the UK in 2011. They are performed once every 10 years. **Please note: census information may include figures for adjacent streets and postcodes.** The figures are therefore representative of the local area, not a specific street address or row of houses. The census

collection is designed so that each group of postcodes should contain at least 100 people (50 in Scotland). This is done to preserve the anonymity of the people in that area, as some postcodes cover a very small area, sometimes a single building. You can see the area covered by the census statistics by clicking "Show Census Area Covered" below the map above. **Due for update following recent 2021 census completion.**

Role of the Provider

Regulation 46 of the *Children's Homes Regulations 2015* introduced a requirement in January 2014 for providers or managers to:

- Ensure that premises used for the purposes of a children's home are appropriately and suitably located so that children cared for by the home are: effectively safeguarded, & able to access services to meet the needs identified in their care or placement plans;
- Review the appropriateness and suitability of the location of the premises at least once in every calendar year. Taking into account the requirement in regulation 12(2)©

Although it's difficult to predict the ever-changing local environment and the associated risks that come with change, the homes management have a responsibility to access all potential risks in the local area and implement strategies to limit, prevent and reduce the risk of a young person being harmed. The home's management will implement a Location Risk Assessment which will be kept under review and amended periodically depending on changes to the local environment and taking into account any new risks as these are identified.

As part of the home's responsibility, ensuring that young people have the opportunity to share their views about the home's location, to establish whether they feel safe and to offer feedback on the quality of care and support that they are offered by not only the home but local services too.

It is important for the home's management have a broad understanding of the area in which the home is located and the characteristics of the local environment.

When carrying out a Location Risk Assessment, the home management will need to take into account;

- Whether the location of the home potentially places an already vulnerable child in an area that could continuing allowing that young person vulnerable to harm such as being targeted for CSE and/or radicalisation
- Whether the location will allow young people to continue exhibiting offending and anti-social behaviour;
- The suitability of the local neighbourhood as a location to care for children who may have already been victims of abuse and neglect; and

- Whether there are environmental factors that would represent a hazard to children, such as locations near busy roads.

Location assessments should also take into account any positive features in a local community that would offer benefits to children living in a children's home. For example, assessments could include evidence about opportunities for children to participate in leisure, sporting or cultural activities, or links with services that could support the child's ethnic or religious identity.

Popular local attractions in the area include:

- Parndon Wood Nature Reserve
- Harlow Museum
- Harlow Town Park – Outside band stand, Skate Park, Pet's corner and Town Farm
- The Gibberd Garden – created by Frederick Gibberd, Master town planner of Harlow new town. Set in a small valley in the grounds of his home and containing 50 sculptures and moated castle among other terraces and vistas.
- Water Gardens – shops and eateries
- The Harvey Centre – Indoor shopping centre, with cinema and restaurants
- Harlow Playhouse - a busy presenting venue serving West Essex and East Hertfordshire and is home to several resident arts groups.
- Harlow Leisure Zone - a £25m state-of-the-art community leisure centre.
- The Square - Harlow's Independent Live Music Venue
- Cineworld, Bowling, go-karting and Quasar
- North Weald Market – England's largest regular Saturday and bank holiday market
- Marks Hall Gardens and Arboretum
- Various retail outlets in areas such as Edinburgh Way

The area continues to be under development to provide local amenities to residents.

Harlow also puts on events during the year such as "Linkfest", the circus, or "Harlow Carnival".

Upon going further outside of Harlow we have access to places such as:

- Lea Valley. Which includes picturesque walks, ice skating, and water sports.
- Easy access to London.
- Shopping centres such as Stratford Westfield which is easily accessible by train or car, or Lakeside which is accessible by car.
- Seaside coastal areas, including Clacton & Southend.
- Flip out Trampoline Park.
- Other local towns that may provide events throughout the year, e.g. Hoddesdon where they have Charter Fayre's or Christmas Markets, or Bishops Stortford where they have weekly markets.

This is not an exhaustive list.

Health Services located near that we use are:

Lister Medical Centre
Staple Tye
Harlow
CM18 7LU

SpecSavers
10-12 Broad Walk,
Harlow
CM20 1HT

Boardwalk dental centre
5 E Walk,
Harlow
CM20 1JH

Princess Alexandra Hospital
Hamstel Road
Harlow
CM20 1QX

Essex sexual health service
1 the stow
Harlow
CM20 3AH

Florence Nightingale centre
Child Development centre
Church Langley
CM17 9TG

Key contacts, resources and services

The Children's home already has links within the local authority in order to consult about any local issues or individual issues with young people. The key links for local services are detailed below and their responses to consultation on the location report.

Local Service	Key Individual and contact details	Feedback for assessment
LADO	<p>Essex Safeguarding Team: 0345 603 7627</p> <p>Essex Duty LADO number: 03330 139 797</p>	<p>The safeguarding team are approachable to report any concern or seek advice if required.</p> <p>There are 3 designated officers: Jacque Wilkes Mechelle DeKock Carole Fuller They work on a rotational basis. They are approachable and support with any allegations or referrals</p>
Crime/Missing Person's	<p>CYP officer: Allen Kittles Allen.Kittles2@essex.police.uk</p> <p>MPLO: Jenny Shearman Bright 42007240 101 Ext. 300380 01279 621 886 Jenny.shearmanbright@essex.pn.n.police.uk</p>	<p>Jenny Bright is updated with missing episodes, or young people entering and leaving the home. Jenny is familiar with SureCare and has worked with another of our residential services in the area having been associated with us for some time. Robin Hance recently left as CYP officer not long before Christmas, and Allen has taken his place.</p> <p>All officers are helpful in regards to supporting are young people and are on hand should we need advice or want to enquire re: any concerns or share any worries.</p>
Local Probation / YOT	<p>West Essex Youth Offending Team 0333 013 8943</p> <p>St Johns Road Epping CM16 5DN</p>	<p>Any young person that comes to the home that already has involvement with YOS and/or commits an offence whilst in placement will be supported by the local YOS. The homes staff will work closely with the local YOS to ensure that any young person that must attend regular appointments and needs support in fulfilling any court order that's in place</p>
Local Health Services		<p>We have positive relationships with the LAC nurse here, who is in</p>

	<p>Claire Cakebread (LAC nurse) 07966161090</p> <p>Florence Nightingale Centre Child Development Centre Church Langley CM17 9TG</p>	<p>regular contact, and offers regular support. The LAC nurses will conduct health assessments if YP's are Essex or the duty is delegated to them.</p> <p>The Florence Nightingale centre can be used for young people to attend LAC health assessments and routine vaccinations.</p>
Residents		<p>Young people can be offered an opportunity to have an input in our community mapping and risk assessment for the local area.</p>

Risk Assessment & Risk Management Strategies

Contents:

- **COVID – 19**
- **Road**
- **Local Park**
- **Pubs in local area**
- **Local Transport Links**
- **Access to local towns**
- **Railway Lines/routes**
- **Harlow Town Hotspots**
- **Additional considerations including local crime information and education/transport links and services.**

Risk Assessment - *Potential risk factors due to the location of the home and the environment surrounding the home;*

Coronavirus:

Coronavirus disease (COVID-19) is an infectious disease caused by a newly discovered coronavirus.

Most people infected with the COVID-19 virus will experience mild to moderate respiratory illness and recover without requiring special treatment. Older people, and those with underlying medical are more likely to develop serious illness.

The world health organisation states People can catch COVID-19 from others who have the virus. The disease can spread from person to person through small droplets from the nose or mouth which are spread when a person with COVID-19 coughs or exhales. These droplets land on objects and surfaces around the person. Other people then catch COVID-19 by touching these objects or surfaces, then touching their eyes, nose or mouth. People can also catch COVID-19 if they breathe in droplets from a person with COVID-19 who coughs out or exhales droplets. Coronavirus disease is highly contagious.

The young people in the home may be exposed to this virus when accessing the local area, mixing with friend or family and accessing shops. Young people may choose to ignore the instructions set out by the Government in relation to social distancing, self- isolation and only leaving the home for the purposes of medical appointments, daily exercise or purchasing essential items such as food or medicine.

In December 2020 a new strain of Covid-19 had been discovered which is more prevalent in the South East and is suspected to spread quicker – so it is important that staff support young people to be as safe as possible if accessing the local area.

Probability of risk occurring			Severity of possible injury/harm			Total Risk
High=3	Moderate=2	Low=1	High=3	Moderate=2	Low=1	
3			3			6

Risk Levels PRIOR to Preventative Measures in place: CORONAVIRUS

Risk Management – *Strategies, actions and protective factors that the home will undertake to manage, limit and prevent the risk of harm to its young people;*

As of 23rd March 2020. The government have set out a clear guidance in relation to reducing the spread of coronavirus and reducing risk. *At the time of this review/update* people are advised to stay at home and are only permitted to leave home for the following reasons; Purchasing essential items such as food and medicine and one form of daily exercise. Staff and young people are also encouraged to wash their hands more regularly and keep 2 metres away from others.

Residential Staff will ensure that the young people have a good understanding of coronavirus and the measures in place to reduce the risks of catching the disease and infecting others. Staff will ensure the young people have the opportunity to discuss how they are feeling and the impact the government guidance is having on them.

The young people will be provided with the opportunity to maintain contact with friends and family via telephone, Skype, zoom and FaceTime, unless it is appropriate for them to have prolonged contact periods as agreed with relevant professionals/family members and risk assessed.

If a young person refuses to comply with the above guidance and chooses to leave the home to either become missing or meet with friends or family, staff must take the following action;

-Staff are to remain in contact with the young person and attempt to encourage them to return to the home.

–Should a young person not follow government guidance during a Lockdown restriction period, staff can contact the local police team on 101, inform the Police that the young person has left the home and is refusing to return (give details of potential locations or known address' that the young person may visit). Staff will be able to form a plan with the local Police on the most appropriate way in which to return the young person.

-Staff must update the local authority (Social worker or EDT if out of hours) and inform them what attempts are being made to encourage the young person to return.

Staff may visit an address where a young person is believed to be, to encourage them to return- Staff must ensure they are adhering to social distancing

- Any logs/occurrences of this will be kept on file.
- PPE is available for all staff & YP's to wear

It should be noted that all residential keyworkers and the workforce employed at SureCare Residential have been offered both Covid-19 vaccinations. A full database of those vaccinated can be viewed at Head Office.

*This may be subject to change due to the changing systems and procedures implemented by the government. Ongoing policy & contingency plans will be updated so refer to this for the most up to date information for staff to follow.

Risk Levels POST to Preventative Measures in place: CORONAVIRUS

Probability of risk occurring			Severity of possible injury/harm			Total Risk
High=3	Moderate=2	Low=1	High=3	Moderate=2	Low=1	
	2			2		4

Risk Assessment - *Potential risk factors due to the location of the home and the environment surrounding the home;*

THE LOCAL PARK AT BUSH FAIR (and paddling pool /water area)

The local park is accessible from the home and within local distance. The Park has appropriate play equipment and apparatus for young children to play and enjoy recreational time.

There is a paddling pool/water area within a field enclosure for summer water activity.

As with play areas this will encourage children and young people to gravitate to the same familiar area.

The young people from the home may gravitate towards young people/adults who are unknown to them. The Park may be used for “hanging out” and be used for anti-social gatherings including mis-use of drug/substances & alcohol.

High=3	Moderate=2	Low=1	High=3	Moderate=2	Low=1	
3			3			6

Risk Levels PRIOR to Preventative Measures in place: BUSH FAIR PARK

Risk Management – *Strategies, actions and protective factors that the home will undertake to manage, limit and prevent the risk of harm to its young people;*

Upon arrival to the home, young people will be given supervised access to the community in order to allow them to familiarise themselves with the local area. This also allows for staff to observe if young people have particular places, they may have an interest in. It also allows staff to safely assess the young people’s ability to access the local area appropriately and safely when using amenities such as

the play park. Should a young person be gravitating to this location and at risk from not using the facilities/area location appropriately then we will discourage this.

Staff will go to this location if there are concerns that a young person maybe frequenting there.

Staff will liaise with police and social work teams re: any concerns, and if there has been a resulting missing episode offer keywork to discuss.

Staff have a good working relationship with the misper liaison officer and cyp officer who are happy to share relevant intelligence.

Risk Levels POST to Preventative Measures in place: BUSH FAIR PARK.

Probability of risk occurring			Severity of possible injury/harm			Total Risk
High=3	Moderate=2	Low=1	High=3	Moderate=2	Low=1	
	2			2		4

Risk Assessment - *Potential risk factors due to the location of the home and the environment surrounding the home;*

Road safety:

A local road directly in front of the home and a potential risk as it is used to access the local residential area. The speed limit is 30mph. However, there is a footpath, and street lighting that is on until midnight. The road is part of a private close so unlikely to be busy apart from access.

The road outside of the residential close is not very busy but does provide access to a large residential area. This can be a risk to staff, young people, or other pedestrians/drivers when young people are displaying challenging behaviour, such as absconding, or wanting to cause harm to themselves. Again, the road is not busy, but driver's reaction time could potentially be an issue if young people are not considering road safety in times of anti-social or aggressively reactive behaviour.

If any young person, staff, or visitor were to access the road during the daylight hours, the road is quite well maintained along with the footpaths. At night there is the added safety of streetlights that go off at midnight. This may only be a risk if young people abscond after midnight and cannot see where they are going.

The home may accommodate young people with a history of missing behaviour and emotional instability and on occasions this may cause them to possibility attempt to leave the premises on foot and access the road in order to abscond or have time and space away from the home. Whilst young people are new to the area there is the added risk that they may be unfamiliar with the local area, potentially resulting in young people getting lost, and causing anxiety.

Probability of risk occurring			Severity of possible injury/harm			Total Risk
High=3	Moderate=2	Low=1	High=3	Moderate=2	Low=1	
	2			2		4

Risk Levels PRIOR to Preventative Measures in place: ROAD SAFETY

Risk Management – *Strategies, actions and protective factors that the home will undertake to manage, limit and prevent the risk of harm to its young people;*

Upon arrival to the home, young people will be given supervised access to the community in order to allow them to familiarise themselves with the local area. This also allows for staff to observe if young people are competent in road safety, stranger danger, and support them in these areas if necessary.

Staff can also offer use of the home’s vehicles in line with individual care plans to support young people to become knowledgeable in the local area in a safe manner.

Prior to accommodating any young person at Bentley’s, this risk assessment can be offered, for potential placing authorities. This can support them to make a clear judgement on if Bentley’s is suitable for their possible young person. As part of a matching process the local area can be discussed, as it may be deemed that Harlow is unsuitable for any reason.

If a young person were to leave the home without support and guidance from staff, staff may offer an alternative option if safe to do so, e.g. walking around the block with staff, using the garden, or going for a drive.

Any concerns around YP’s in relation to the road will be added in their individual risk assessment.

Risk Levels POST to Preventative Measures in place: ROAD SAFETY

Probability of risk occurring			Severity of possible injury/harm			Total Risk
High=3	Moderate=2	Low=1	High=3	Moderate=2	Low=1	
		1			1	2

Risk Assessment - *Potential risk factors due to the location of the home and the environment surrounding the home;*

Pubs in local area:

We are situated in proximity of a local pubs, the “Poplar Kitten”

This Public House is within a couple of minutes’ walk from the home.

This pub tends to be family friendly, and mainly locals use these pubs. They do not tend to bring many people from the wider community to utilise them.

The pub shuts at 11pm on a weeknight, and 12am on Friday and Saturday. There is minimal disruption to the community from these pubs, and noise is rarely heard from people who use them. Occasionally on a rare weekend, there may be some noise heard from passers-by coming from the Pub, however unless accessing our close as a resident the footfall from the pub is unlikely to affect the home or noise issues impacting the home as the home is set in a private close..

There may be a slight risk from these pubs of young people interacting with people who are under the influence, and may have a negative impact on our young people.

On occasion in the past young people may situate themselves out the front of the public house to access the free Wi-Fi (if for some reason they are not allowed to access homes WI-FI).

Probability of risk occurring			Severity of possible injury/harm			Total Risk
High=3	Moderate=2	Low=1	High=3	Moderate=2	Low=1	
		1			1	2

Risk Levels PRIOR to Preventative Measures in place: PUBS IN LOCAL AREA

Risk Management – *Strategies, actions and protective factors that the home will undertake to manage, limit and prevent the risk of harm to its young people;*

Staff regularly review individual risk profiles and management plans to identify and understand young people's current risky behaviours.

Staff have regular and effective communications with local police. Bentleys has an appointed liaison officer to communicate any safety concerns regarding exploitation or YP's missing from home.

We reduce the risk of our young people interacting with residents who use the local pub late in the evening by securing the home and engaging our young people within the home.

In regards to Wi-Fi young people are allowed to have access to this within the home, (in line with individual care plans and risk assessments) which can lower the risk of young people going to the local pub to access Wi-Fi.

If we are also made aware of this, staff will work with this around the young people, to discuss safety around this, and how there is potential they can be put in a vulnerable position by situating themselves outside of pubs.

It must be said, that in over the 7 years we have had young people residing in the Harlow area (in an alternate home), there have been no issues in regards to the local pubs, and any interaction young people have had in relation to them has been positive (e.g. in the past we have had young people who have made friends local peers and used a public house to play pool with no negative impact).

Risk Levels POST to Preventative Measures in place: PUBS IN LOCAL AREA

Probability of risk occurring			Severity of possible injury/harm			Total Risk
High=3	Moderate=2	Low=1	High=3	Moderate=2	Low=1	
		1			1	2

Risk Assessment - *Potential risk factors due to the location of the home and the environment surrounding the home;*

Local Transport Links;

We have a bus service that runs local to the home which can take you to Harlow Town centre or the train station. This is a service that runs from early morning to late night but only runs a limited service on a Sunday.

There are two mainline rail stations in Harlow: Harlow Town and Harlow Mill.

Both have connections to London Liverpool Street and Stanstead Airport. Access to the London underground at Tottenham Hale Station can be reached in under 20 minutes and Liverpool Street reached in 40 minutes. If travelling in the opposite direction Cambridge can be reached in 50 minutes. Epping underground station is 6.3 miles from the home. The station serves as the north-eastern terminus of the central line.

There is a direct link to the M11 within a very short drive from the home and access to the M25 from the M11. The A10 can be accessed from the M25 which gives a direct route into central London. The M11 also gives direct access to Cambridge in the opposite direction. Harlow is well served by various national and regional coach operators.

We must be mindful when looking at referrals if young people are prolific absconders, high risk of CSE or gang connections due to the vast methods of transport available. Due to the ease of getting in and out of London we will always communicate this with potential placements if applicable.

Probability of risk occurring			Severity of possible injury/harm			Total Risk
High=3	Moderate=2	Low=1	High=3	Moderate=2	Low=1	
	2			2		4

Risk Levels PRIOR to Preventative Measures in place: LOCAL TRANSPORT LINKS

Risk Management – *Strategies, actions and protective factors that the home will undertake to manage, limit and prevent the risk of harm to its young people;*

With the suburban location of Bentleys and the vast amount of transport links to and from the home, the home will struggle to offer an environment that can potentially restrict and discourage young people from exhibiting missing behaviour however the train station being a fair distance from the home staff can easily arrive at the station prior to their arrival. Also, if a young person was to abscond via busses there is no direct bus from the home to the train station the young person will need to stop at the bus station in Harlow, which again staff can get to very quickly with the use of the company cars.

Initiating SureCare’s matching process and formulating an initial risk assessment in collaboration with the placing authority, family (if appropriate) and any other relevant professionals, will assist the homes

manager in making an informed decision as to whether the homes location and large amount of transport links will be a significant enough deterrent and safeguarding measure to reduce a young person's missing behaviour. The homes staff will be aware of the local bus and train routes and the homes risk assessment and missing protocols will reflect the actions that staff will take if a young person were to attempt to access local transport. As mentioned previously, staff have company vehicles that will allow staff to follow any buses and attend any local train stations in attempt to prevent and reduce the chances of any harm coming to a young person.

The home has already established a good working relationship with the local Missing Person's Liaison Officer, CYP officer, and local PCSO through Essex Police and will work closely in partnership with them to reduce the risk of any harm coming to our young people

Risk Levels POST to Preventative Measures in place: LOCAL TRANSPORT LINKS

Probability of risk occurring			Severity of possible injury/harm			Total Risk
High=3	Moderate=2	Low=1	High=3	Moderate=2	Low=1	
	2				1	3

Risk Assessment - *Potential risk factors due to the location of the home and the environment surrounding the home;*

Access to Towns & Villages;

The home is situated approximately 2.4 miles away from Harlow Town centre. It has many shops, pubs, clubs, fast food chains and restaurants. The majority of the shops are closed by 8pm but the fast-food chains, entertainment and transport links would be accessible late into the night.

The closest shop is a 5-minute walk from our home; this is a local convenience store. We also have a variety of small shops located in Bush Fair shopping centre just outside of Tye Green Village, of which none of these are open late into the night.

The home is situated between Sawbridgeworth which is 6.4 miles away and Epping. Epping is 6.3 miles away from the home. Both have many shops but Epping also has an underground station and a large forest area.

Naturally, the home will have to consider that when conducting the matching process, that any concerns about a young person spending time in the Town centre and smaller surrounding towns mentioned could be a risk. The risk of harm and exposure to negative influences will need to be considered prior to the commencement of the placement along with how the more time is spent in these areas may cause a young person to be exposed to crime and anti-social behaviour as well as potentially be groomed and/or subject to CSE.

Probability of risk occurring			Severity of possible injury/harm			Total Risk
High=3	Moderate=2	Low=1	High=3	Moderate=2	Low=1	
	2			2		4

Risk Levels PRIOR to Preventative Measures in place: ACCESS TO LOCAL TOWNS

Risk Management – *Strategies, actions and protective factors that the home will undertake to manage, limit and prevent the risk of harm to its young people;*

Whilst maintaining a balance of encouraging social skills and educating young people on potential risks, the home will prior to any placement commencing have an initial RAMP in place that outlines the potential risks and vulnerabilities of each young person.

Due to the nature and location of the service, it is very likely that any young people that are accommodated at Bentleys will be initially on 1:1 supervision out in the community until such time that all the homes management, placing authority and family (where appropriate) are satisfied that a young person is able to be trusted to manage their behaviour out in the community on their own and not place themselves at risk of harm.

All arrangements for young people having “free time” away from the home will be discussed and agreed with all the professionals involved, with the family (where appropriate) and with the young person to ensure that the young person feels that they have contributed to the decision making, that they are aware of the expectations placed upon them and understand the reasons for certain decisions being made.

Once any arrangements are in place it will be the homes duty to frequently monitor the arrangements around a young person’s unsupervised time and ensure that this “free time” is being used suitably and in a way that ensures that the young person remains safe from harm.

There are numerous non-invasive and intrusive monitoring strategies that the homes staff can use to monitor a young person’s behaviour, safety and “free time” such as;

- Regular communication with a young person before, during and after any “free time” to monitor their movements
- Work closely with the young person’s family, friends and any relevant people at clubs, schools and schemes to gather important information about how the young person is whilst away from the home
- Staff noticing a change in patterns of behaviour; for example, a young person begins returning home and not presenting as they usually do, that a young person has some new belongings that cannot be explained and sensitively exploring why a 10-minute train journey has taken 2 hours

Staff will record and report in a timely manner any concerning patterns of behaviour, sudden changes to how a young person is presenting as well as any concerns around CSE, CCE, radicalisation or any other risks that may present. The homes staff will work with all professionals and external services in order to protect a young person from harm and frequently consult with the relevant services to monitor any ongoing risks

Due to us working in close partnership with our allocated police officers, they are usually open around particular risks at certain areas that our young people may frequent, or inform us if young people’s peers are desirable (without breaking confidentiality).

Provided at the back of this document, are some crime statistics on the area of Harlow.

Risk Levels POST to Preventative Measures in place: ACCESS TO LOCAL TOWNS

Probability of risk occurring			Severity of possible injury/harm			Total Risk
High=3	Moderate=2	Low=1	High=3	Moderate=2	Low=1	

		1			1	2
--	--	---	--	--	---	---

Risk Assessment - *Potential risk factors due to the location of the home and the environment surrounding the home;*

Railway Lines:

There is a railway line 1.7 miles away from the home.

This railway line cannot be accessed easily on foot and is not in the direct vicinity of the home and has high fencing surrounding it restricting any access to unauthorised persons

Probability of risk occurring			Severity of possible injury/harm			Total Risk
High=3	Moderate=2	Low=1	High=3	Moderate=2	Low=1	
	2		3			5

Risk Levels PRIOR to Preventative Measures in place: RAILWAY LINES

Risk Management – *Strategies, actions and protective factors that the home will undertake to manage, limit and prevent the risk of harm to its young people;*

Although the railways lines are some distance from the home and not easily accessed, this is a risk that must be considered and reviewed during the matching process and throughout a young person’s placement at Bentleys. The railways lines are not something that a young person will immediately be drawn to or can access easily as it requires a fair amount of walking.

Staff will support any young person that leaves the home by safely following on foot and/or the homes vehicle to attempt to return the young person to the home safely without any significant incidents occurring. Staff that following young people on foot will have access to a “Grab Bag” that will contain essential items and equipment that maybe needed to support staff in trying to minimise the risk of the young person coming to any harm. The items in the “Grab-Bag” include;

- A torch, map of the local area, some money, a first aid kit and a whistle.

If in extreme circumstances a young person is placing themselves and/or staff at risk then staff may have no option but to use physical intervention as a safety measure and/or contact the emergency services for assistance.

Risk Levels POST to Preventative Measures in place: RAILWAY LINES

Probability of risk occurring			Severity of possible injury/harm			Total Risk
High=3	Moderate=2	Low=1	High=3	Moderate=2	Low=1	
		1		2		3

Risk Assessment - *Potential risk factors due to the location of the home and the environment surrounding the home;*

Harlow Town Hotspot's (see also community mapping information for individual hot spots)

Adams House

This is a block of flats that young people gravitate towards. It is known for its anti-social behaviour, which includes criminal damage both to buildings and vehicles, arson, theft, violence and sexual offences. In the past we have been made aware that some vulnerable people have been housed here. This could lead to our YP's exploiting or being exploited.

Asda Woods

There is a green area opposite the water gardens, where young people are known to congregate and socialise. The young people refer to this as "Asda Woods". Whilst there are no particular associated risks with the area, it must be considered that with a large amount of young people congregating in one place, there could be a level of risk involved. For instance, anti-social behaviour.

On the back of the green, there is a small wooded area, which young people, when being followed for safeguarding reasons (e.g., risk of missing episodes), have tried to lose staff, and have sometimes succeeded. Upon staff following young people into the wooded area, there appears to be debris (takeaway wrappers, alcohol containers, cigarettes), which may indicate that people congregate there to socialise.

Harvey centre

The Harvey Centre is the indoor shopping centre that young people are sometimes known to gravitate towards. Our young people usually use this to shop or do leisure activities in. Are young people do not use this resource inappropriately, or behave inappropriately.

McDonald's (town centre)

Young people have been known to congregate outside of McDonald's. There has been known to be big groups before outside of these chains.

Again, whilst this is not a risk in itself, it may present and increase risky behaviours. In the past this has been evident in when staff have tried to locate young people, young people may feel more confident to challenge staff when other peers are around, or try to embarrass staff and act more confident in front of an audience of peers.

Probability of risk occurring			Severity of possible injury/harm			Total Risk
High=3	Moderate=2	Low=1	High=3	Moderate=2	Low=1	
	2			2		4

Risk Levels PRIOR to Preventative Measures in place: HARLOW TOWN HOTSPOTS

Risk Management – *Strategies, actions and protective factors that the home will undertake to manage, limit and prevent the risk of harm to its young people;*

Staff are aware that some young people may locate areas which could be deemed as inappropriate connections, such as where homelessness is apparent.

Staff support young people to know where the safer areas are. Staff will link in with local community police and liaison officers to ensure safeguarding is stringent and communicated as a multi-agency/joint network at all times.

If attending this area to locate young people when missing, or behaving inappropriately, 2 staff may need to attend.

Staff should also ensure of they are trying to locate young people they access the grab bag in cases of MFC (missing from care) episodes.

The Harvey Centre is the indoor shopping centre that young people are sometimes known to gravitate towards. Our young people usually use this to shop or do leisure activities in. Are young people do not use this resource inappropriately, or behave inappropriately.

There are security officers that patrol the Harvey Centre, and there is CCTV monitoring throughout the Harvey Centre. The security officer are usually helpful if we ask for information/support when our young people may be missing.

Young people have been known to congregate outside of **McDonald's**. There has been known to be big groups before outside of these chains. If safe to do so staff should encourage the young person to return or disengage from inappropriate behaviour. If staff have concerns, they should contact the home for extra support, or emergency services if necessary. Where McDonalds is situated, it is possible staff can observe from a distance if this is the safest option.

Staff will support any young people that leaves the home by safely following on foot and/or the homes vehicle to attempt to return the young person to the home in a safely without any significant incidents occurring. Staff that following young people on foot will have access to a "Grab Bag" that will contain essential items and equipment that maybe needed to support staff in trying to minimise the risk of the young person coming to any harm.

If in extreme circumstances a young person is placing themselves and/or staff at risk then staff may have no option but to use physical intervention as a safety measure and/or contact the emergency services for assistance

Our misper liaison officer will also be updated of any MISPER episodes, and any new locations that come to light. Staff should always ensure they are considering their safety when working with young people in these hotspots.

Risk Levels POST to Preventative Measures in place: HARLOW TOWN HOTSPOTS

Probability of risk occurring			Severity of possible injury/harm			Total Risk
High=3	Moderate=2	Low=1	High=3	Moderate=2	Low=1	
	2				1	3

Created by: Registered Homes manager/Responsible Individual – June 2021

Signed:

To be reviewed: By December 2021 as this is an initial assessment for a new service. (will be sooner if there are any significant changes/events)

Consultation with Professionals about location assessment of risk

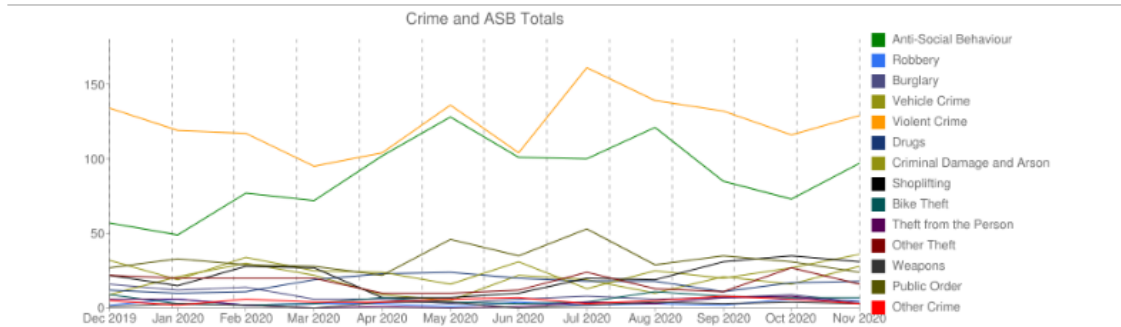
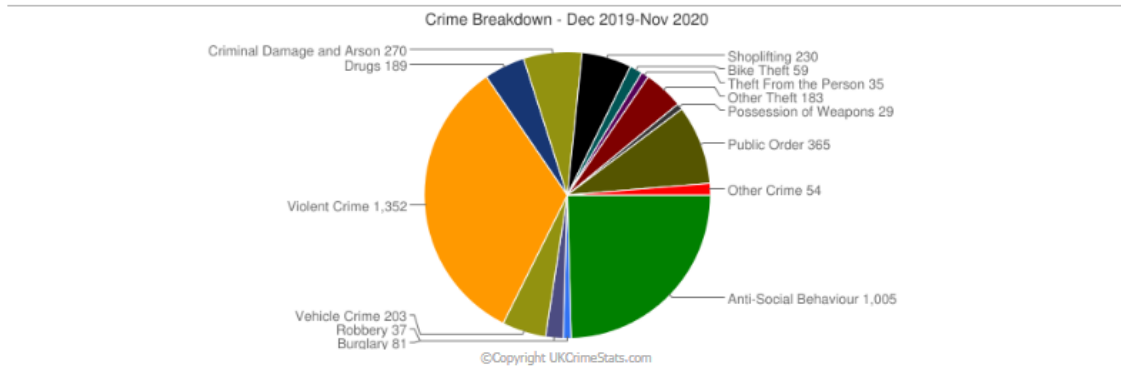
It should be noted that this is an additional service provision our organisation has opened in the area of Harlow. Therefore, previous consultations with local professional partnerships including Police Service/Liaison Officers, Health professionals, Youth Offending services, CAMHS, have all been reviewed and considered for the area location when assessing appropriate access to amenities, local services and risk factors.

We work closely with all professional partnerships to ensure that safeguarding of our young people and safe risk taking is paramount in our planning at all times.

Ongoing review of this assessment will include consultations and inclusion of continued partnership contributions to reflect any changes to assessment of risk factors.

Crime statistics for Harlow:

Crime Plus ASB Breakdown for Harlow Central

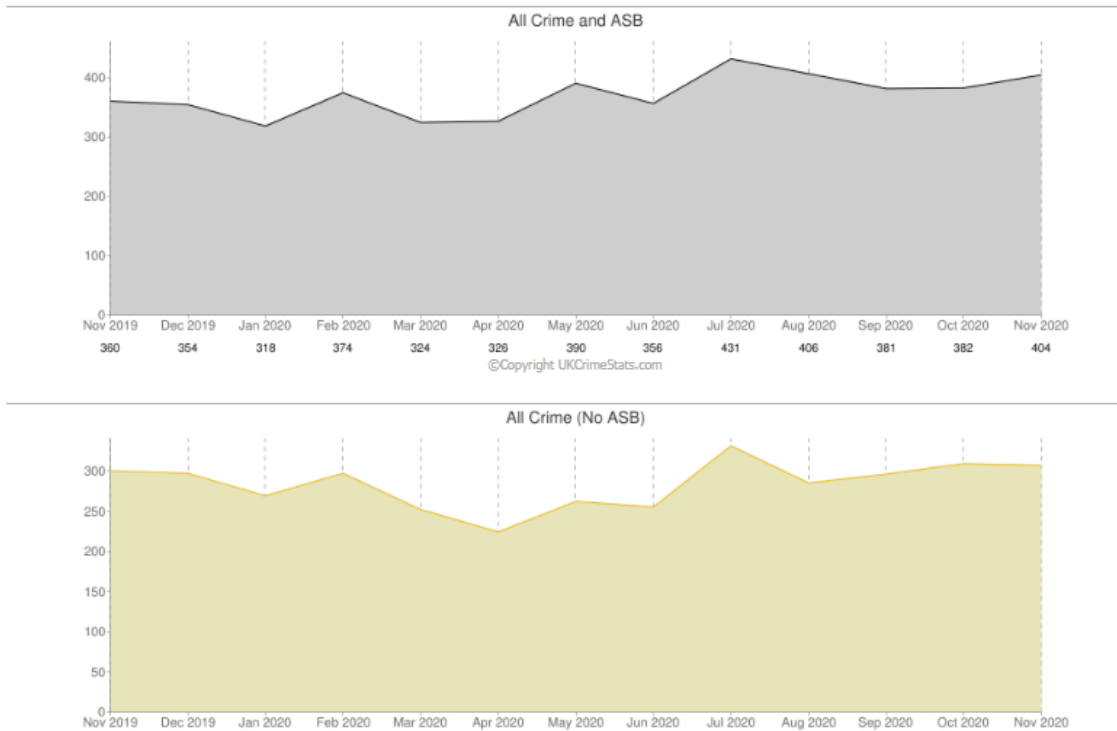


Neighbourhood crime league table

The league table below looks at the total crimes and *crime rate* for November 2020 that occurred in all neighbourhoods within 5 miles of and orders them by lowest crime rate first.

Rank	Neighbourhood	Total	Total	
			Rate	
1	Harlow East (1.59 miles)		129	7.94
2	Epping West (2.86 miles)		124	10.23
3	Epping Town (4.15 miles)		203	12.12
4	Harlow South (1.24 miles)		196	13.71
5	Harlow North (2.16 miles)		231	16.37
6	Harlow West (0.94 miles)		274	17.86
7	Harlow Central (0.00 miles)		404	18.53

Crime Type and ASB Charts for Harlow Central



Anti-social behaviour

These are the 46 **Anti-social behaviour** crimes recorded in March 2021 within half a mile of Tye Green Village, Harlow, CM18 6QF. Click the tabs above to view crimes in other categories.

Bicycle theft

These are the 1 **Bicycle theft** crimes recorded in March 2021 within half a mile of Tye Green Village, Harlow, CM18 6QF. Click the tabs above to view crimes in other categories.

Burglary

These are the 5 **Burglary** crimes recorded in March 2021 within half a mile of Tye Green Village, Harlow, CM18 6QF. Click the tabs above to view crimes in other categories.

Drugs

These are the 2 **Drugs** crimes recorded in March 2021 within half a mile of Tye Green Village, Harlow, CM18 6QF. Click the tabs above to view crimes in other categories.

Possession of weapons

These are the 2 **Possession of weapons** crimes recorded in March 2021 within half a mile of Tye Green Village, Harlow, CM18 6QF. Click the tabs above to view crimes in other categories.

Shoplifting

These are the 3 **Shoplifting** crimes recorded in March 2021 within half a mile of Tye Green Village, Harlow, CM18 6QF. Click the tabs above to view crimes in other categories.

Robbery

These are the 1 **Robbery** crimes recorded in March 2021 within half a mile of Tye Green Village, Harlow, CM18 6QF. Click the tabs above to view crimes in other categories.

LOCAL EDUCATION PROVISIONS

William Martin Church of England Infant and Nursery School

Distance: 0.18 Miles

Phase: Primary

Ofsted Score: 2 Good (Inspected 02/11/2016)

Number of Pupils: 210

Address: William Martin Church of England Infant and Nursery School, Tawneys Road, CM18 6PN

Head: Mrs Gina Bailey (Headteacher)

Website: Visit School Website

Directions from Tye Green Village to William Martin Church of England Infant and Nursery School

William Martin Church of England Junior School

Distance: 0.33 Miles

Phase: Primary

Ofsted Score: 2 Good (Inspected 04/07/2014)

Number of Pupils: 230

Address: William Martin Church of England Junior School, Tawneys Road, CM18 6PN

Head: Gina Bailey ()

Directions from Tye Green Village to William Martin Church of England Junior School

TBAP Aspire AP Academy

Distance: 0.34 Miles

Ofsted Score: 4 Inadequate (Inspected 01/07/2019)

Number of Pupils: 40

Address: TBAP Aspire AP Academy, Commons Road, CM18 7EZ

Head: Ms Emma Twell (Principal)

Website: Visit School Website

Directions from Tye Green Village to TBAP Aspire AP Academy

Harlow Fields School and College

Distance: 0.39 Miles

Ofsted Score: 2 Good (Inspected 17/11/2014)

Number of Pupils: 152

Address: Harlow Fields School and College, Tendring Road, CM18 6RN

Head: Mrs Kathleen Wall (Headteacher)

Website: Visit School Website

Directions from Tye Green Village to Harlow Fields School and College

RAILWAY STATIONS

Harlow Town Station is 1.82 miles away.

Address: Harlow Town station, Station Approach, off Edinburgh Way, Harlow, CM20 2JD

Harlow Town is situated on the West Anglia Main Line and is managed by Greater Anglia.

Harlow Town Station is staffed on a full-time basis.

Harlow Mill Station is 2.59 miles away.

Address: Harlow Mill station, Station Approach, off Cambridge Way, Harlow, CM20 2EL

Harlow Mill is situated on the West Anglia Main Line and is managed by Greater Anglia.

Harlow Mill Station is staffed on a part time basis.

Roydon Station is 3.36 miles away.

Address: Roydon station, High Street, Roydon, Essex, CM19 5EH

Roydon is situated on the West Anglia Main Line and is managed by Greater Anglia.

Roydon Station is staffed on a part time basis.

Rye House Station is 4.48 miles away.

Address: Rye House station, Rye Road, Hoddesdon, Essex, EN11 0EG

Rye House is situated on the Hertford East branch line and is managed by Greater Anglia.

Rye House Station is staffed on a part time basis.

Motorway Links:

Junction: M11 J7/A414/B1393 - 1.5 Miles Away

Directions from Tye Green Village to M11 J7/A414/B1393

Junction: M11 J6/M25 J27 - 5.34 Miles Away

Directions from Tye Green Village to M11 J6/M25 J27

Junction: M25 J26/A121 - 6.22 Miles Away

Directions from Tye Green Village to M25 J26/A121

Junction: M11 J5/A1168 - 8.04 Miles Away

Directions from Tye Green Village to M11 J5/A1168